

TAXING UNIT: 25

PART OF THE NE 1/4, OF SEC. 27, T.6N., R.1W., S.L.B. & M.

NOB HILL ADDITION

BLOCKS 30 & 31

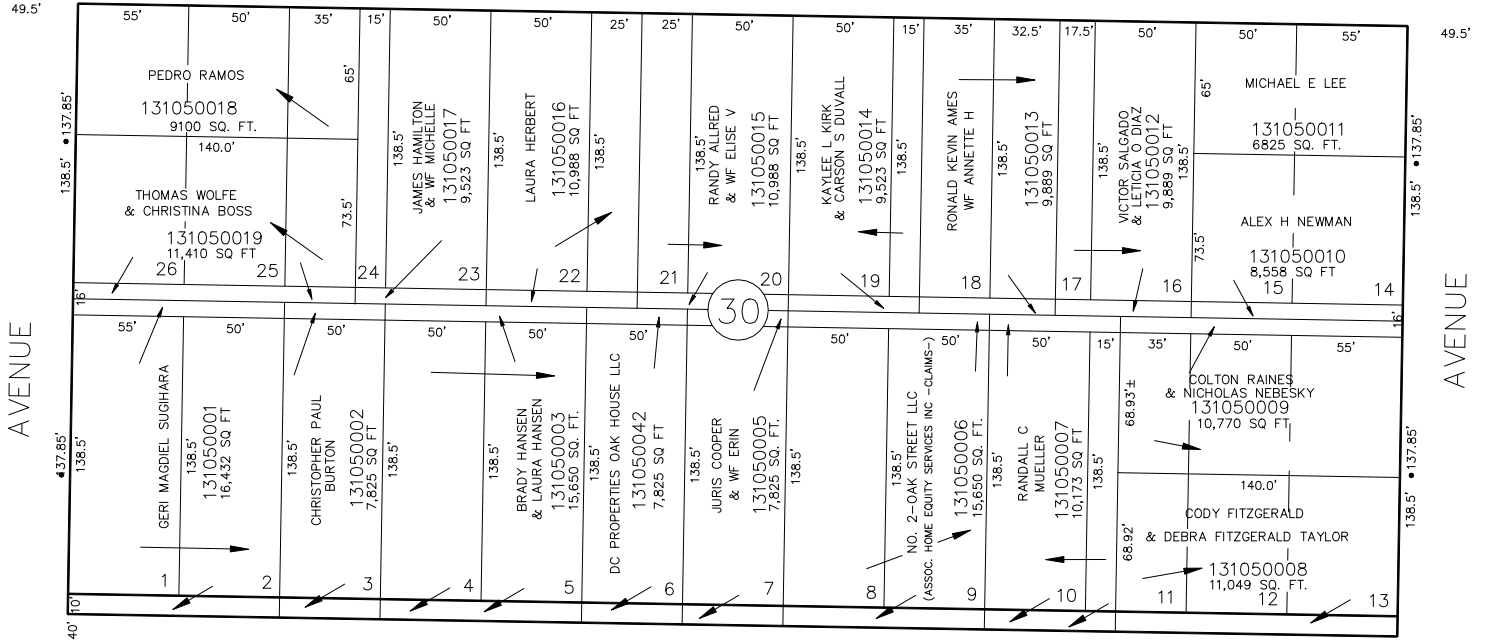
IN OGDEN CITY

SCALE 1" = 50'

21ST

SEE PAGE 104

STREET

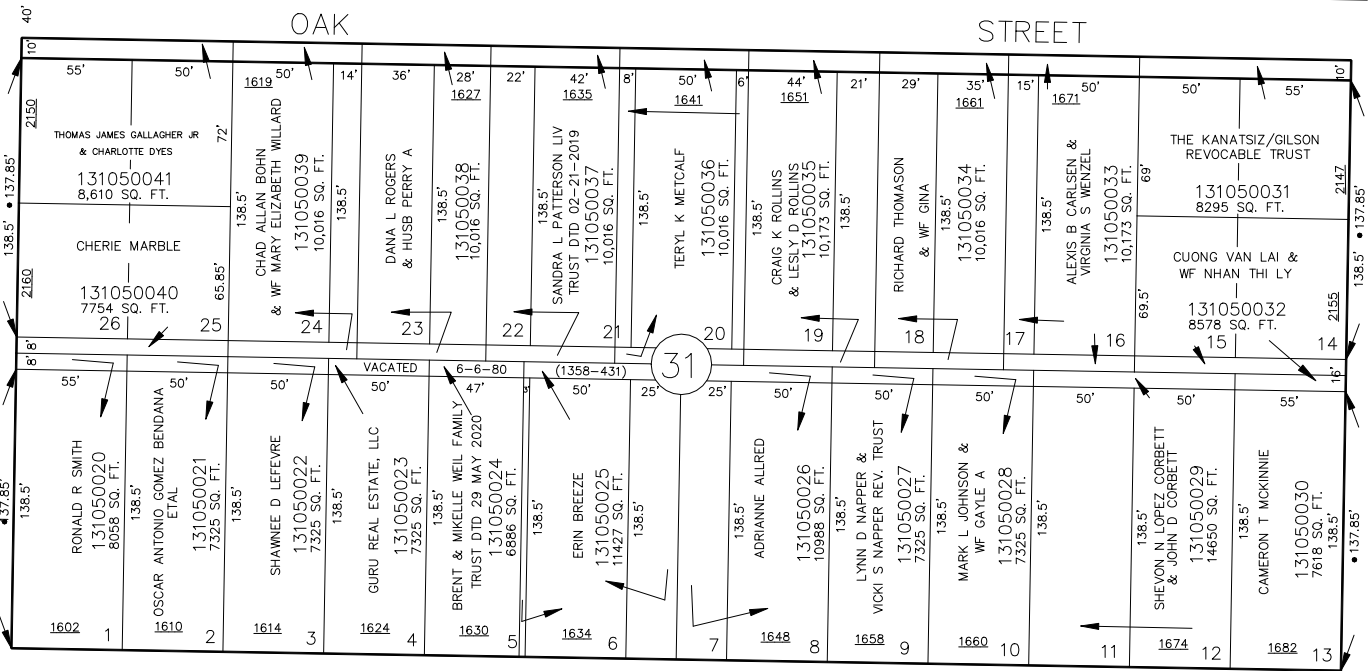


SEE PAGE 102

FILLMORE

OAK

STREET



SEE PAGE 109

PIERCE

• OGDEN CITY ENG. DEPT. PLATS  
• ORIG. DED. PLAT

22ND

STREET

FOR COMPLETE ENG DATA SEE  
ORIGINAL DEDICATION PLAT IN  
BOOK 6, PAGE 1 OF RECORDS.