

PART OF THE SE.1/4, OF THE NE.1/4, OF SEC. 27, T.6N., R.1W., S.L.B. & M.

109

NOB HILL ADDITION

BLOCKS 40 & 41

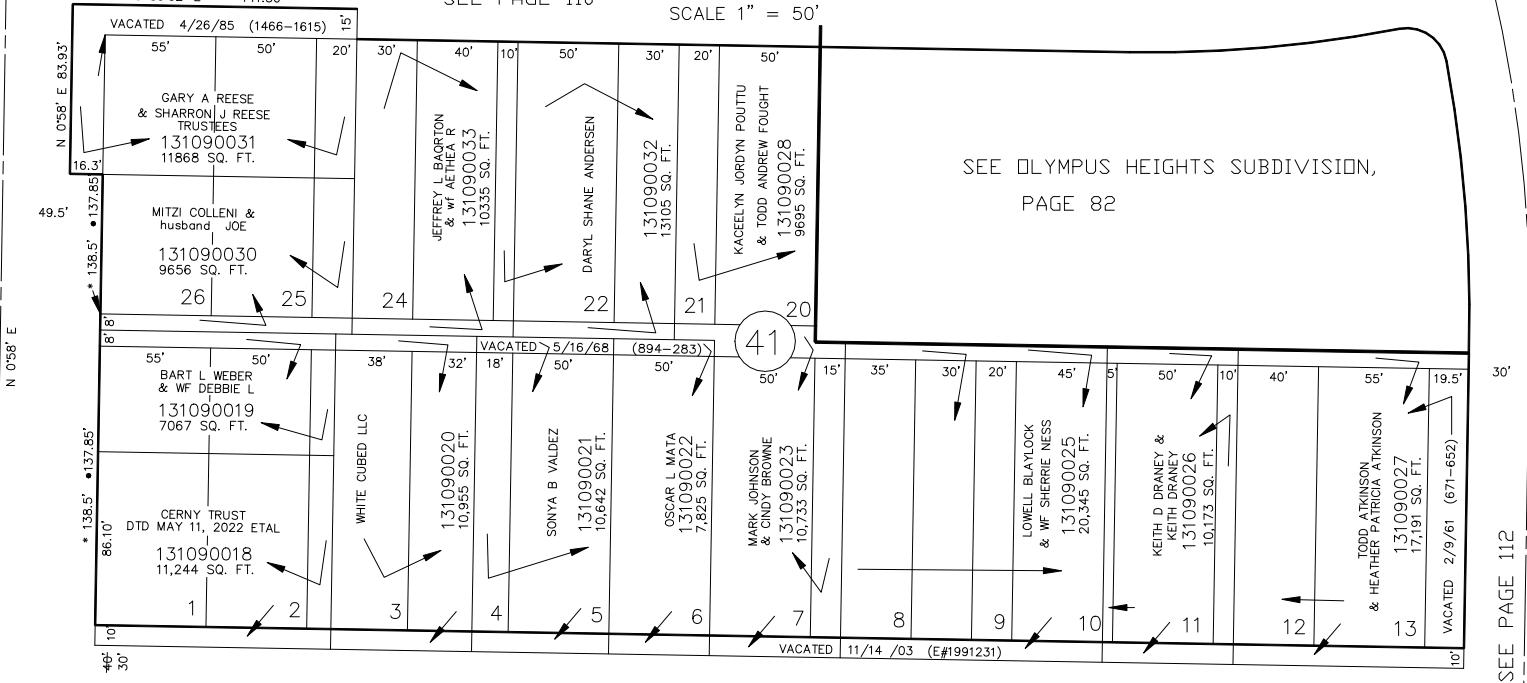
IN OGDEN CITY

SEE PAGE 110

SCALE 1" = 50'

TAXING UNIT: 25

S 89°02' E 141.50'



S 89°02' E

OAK STREET

PIERCE AVENUE

BUCHANAN AVENUE

49.5'

30'

22ND STREET

S 89°02' E

• OGDEN CITY ENG. DEPT. PLATS
• ORIG. DED. PLAT

FOR COMPLETE ENG DATA SEE
ORIGINAL DEDICATION PLAT IN
BOOK 1, PAGE 6 OF RECORDS.

SEE PAGE 107

FOR TAX PURPOSES ONLY

JPS 3-94