

PART OF S.E. 1/4 OF N.W. 1/4 OF SEC. 27, T.6 N., R.1.W., S.L.B. & M.

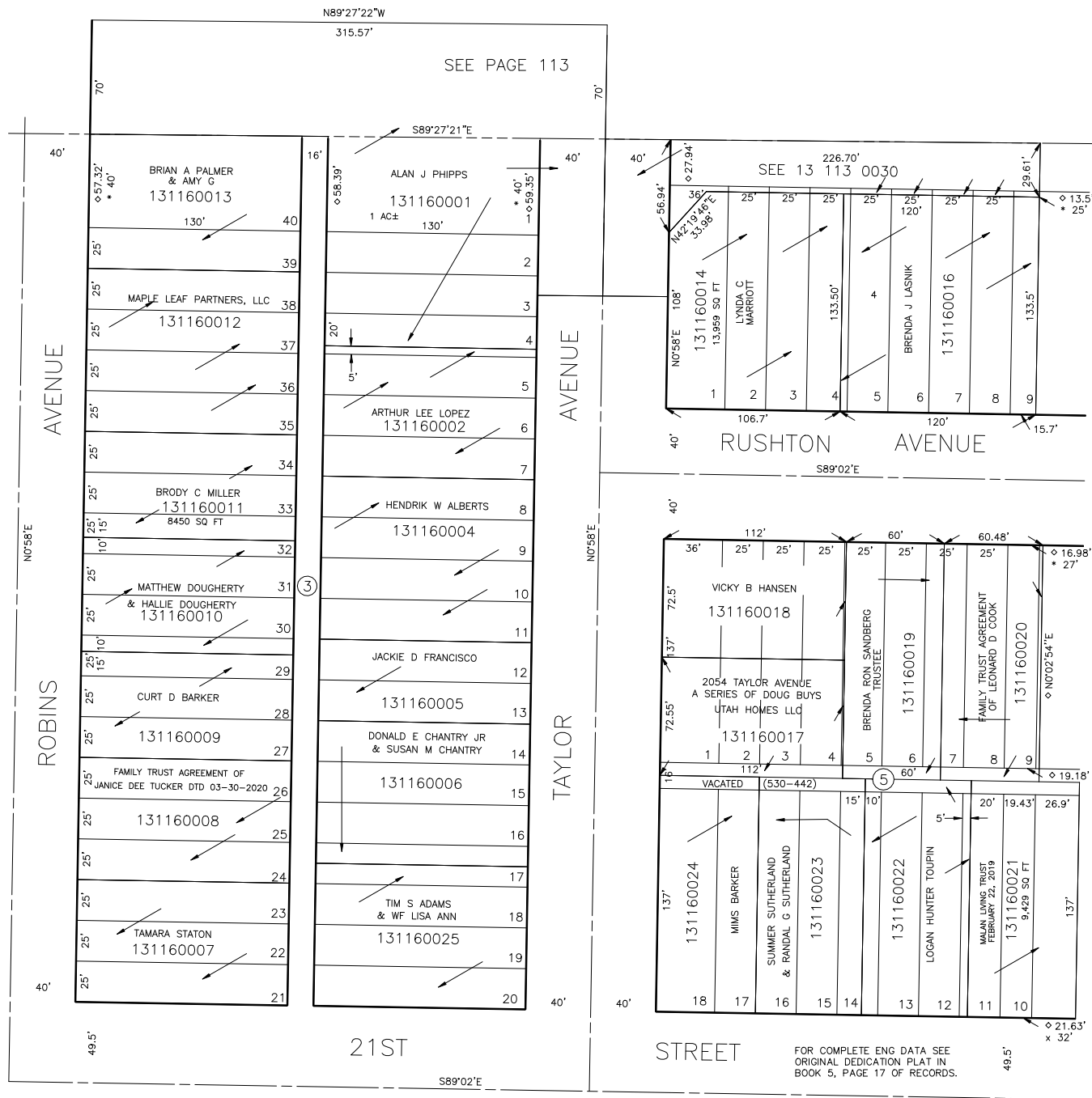
MOUNTAIN VIEW ADDITION

BLOCKS 3,4, 5

IN OGDEN CITY

SCALE: 1" = 50'

TAXING UNIT: 25



SEE PAGE 86

SEE PAGE 103

◇ OGDEN CITY ENG. DEPT. PLATS
x DRIG. DED. PLAT

SEE PAGE 117

FOR TAX PURPOSES ONLY

CRR 1-99