

PART OF N.W. 1/4 OF SECTION 27, T.6N., R.1W., S.L.B. & M.

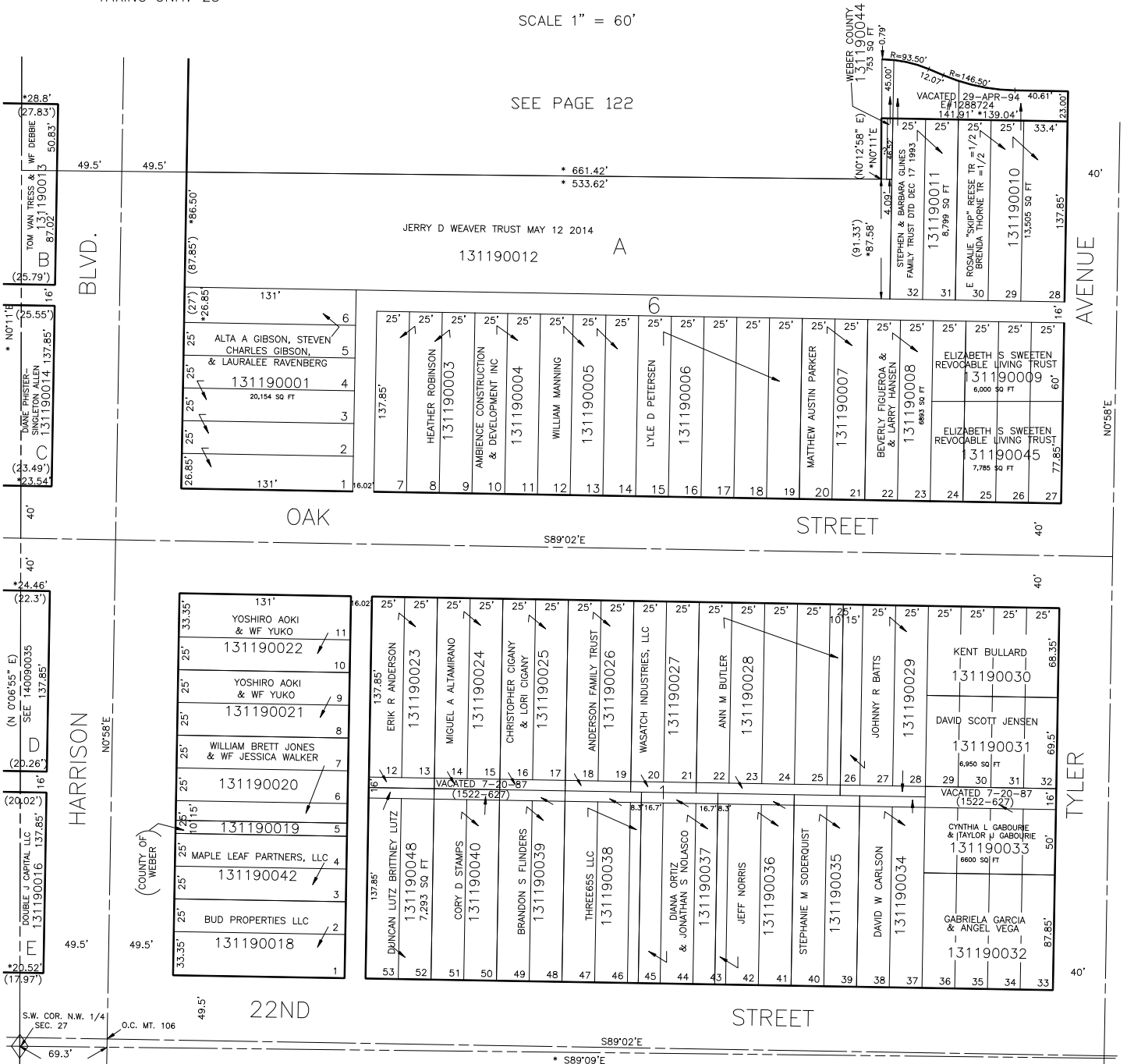
119

BRUMMITTS ADDITION
BLOCKS 1, 6 AND LOTS A,B,C,D,E

TAXING UNIT: 25

IN OGDEN CITY
SCALE 1" = 60'

SEE PAGE 122



* ORIG. DED PLAT
() OGDEN CITY ENG. DEPT. PLATS

SEE BOOK 2, PAGE 34

FOR COMPLETE ENG DATA SEE
ORIGINAL DEDICATION PLAT IN
BOOK XX, PAGE XXX OF RECORDS.

FOR TAX PURPOSES ONLY

SEE PAGE 120

WFJ 12-71