

PART OF N.W. 1/4 OF SEC. 27, T.6N., R.1W., S.L.B.&M.

BRUMMITTS ADDITION

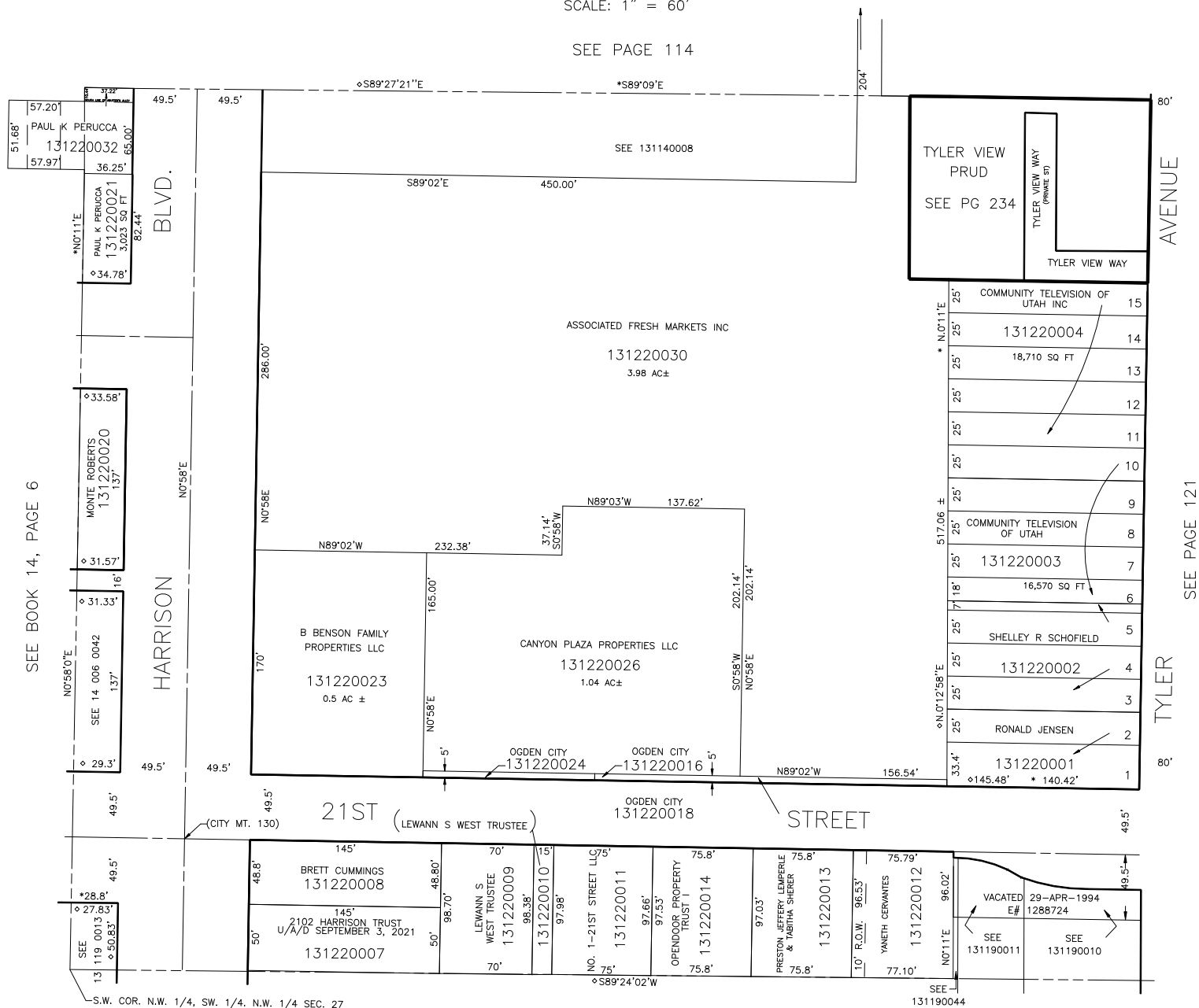
BLOCK 5

IN OGDEN CITY

SCALE: 1" = 60'

SEE PAGE 114

TAXING UNIT: 25



◇ OGDEN CITY ENG. DEPT. PLATS
* ORIG. DED. PLAT

SEE PAGE 119

FOR COMPLETE ENG DATA SEE
ORIGINAL DEDICATION PLAT IN
BOOK 5, PAGE 5 OF RECORDS.