

PART OF THE EAST 1/2, OF SECTION 21, T.6N., R.1W., S.L.B. & M.

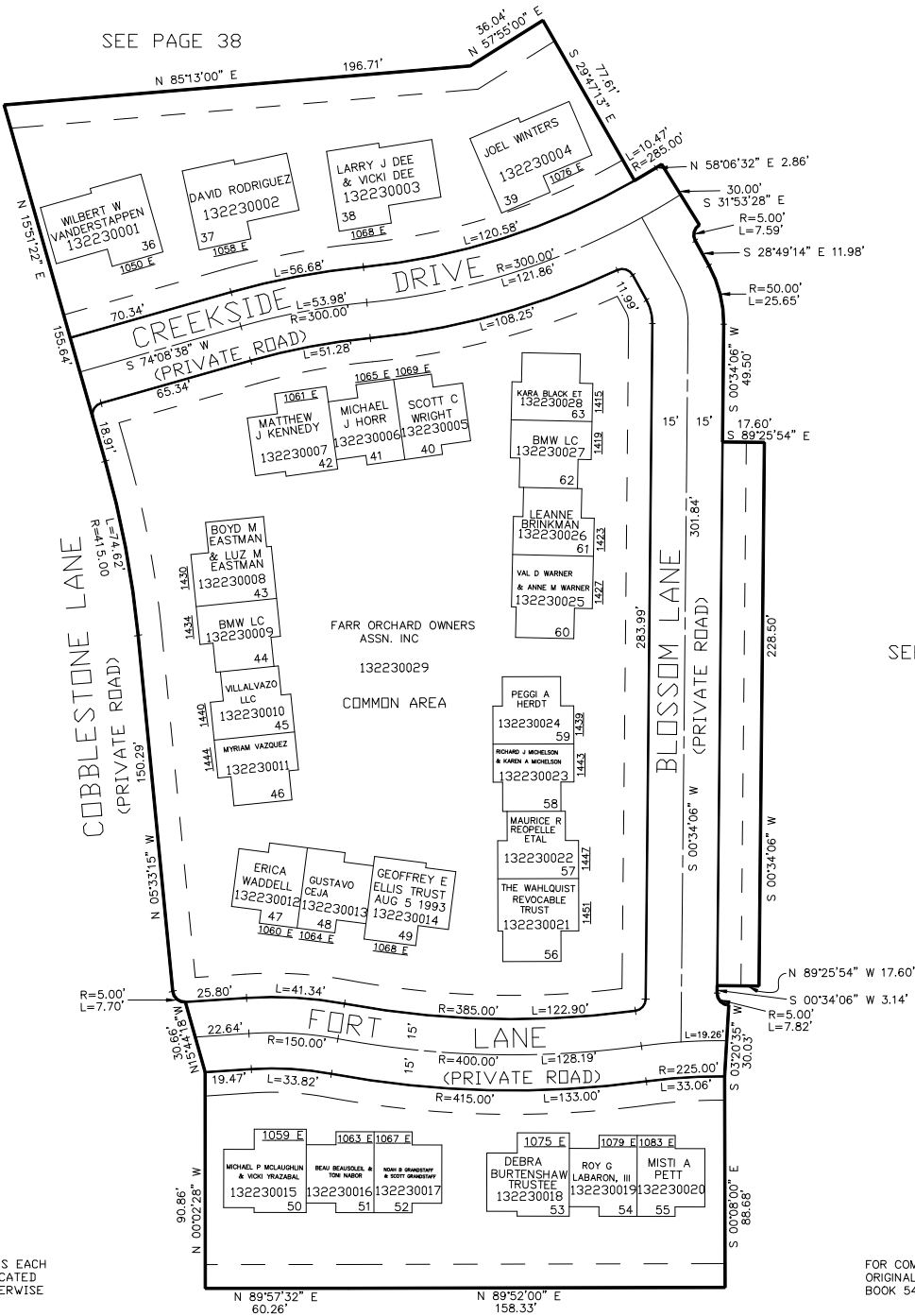
FARR ORCHARD PHASE 2

A PRUD

IN OGDEN CITY

SCALE 1" = 40'

TAXING UNIT: 25



SEE PAGE 219

SEE PAGE 38

10' UTILITY & DRAINAGE EASEMENTS EACH SIDE OF PROPERTY LINES AS INDICATED BY DASHED LINES EXCEPT AS OTHERWISE SHOWN.

FOR COMPLETE ENG DATA SEE ORIGINAL DEDICATION PLAT IN BOOK 54, PAGE 14 OF RECORDS.

SEE PAGE 38

FOR TAX PURPOSES ONLY