

PART OF THE N.W 1/4 & THE N.E. 1/4, SEC. 28, T.6N., R.1W., S.L.B. & M.

RUSHTON ADDITION

BLOCKS 6 & 7

FOR COMPLETE ENG DATA SEE  
ORIGINAL DEDICATION PLAT IN  
BOOK 5, PAGE 18 OF RECORDS.

TAXING UNIT: 25

21ST

IN OGDEN CITY

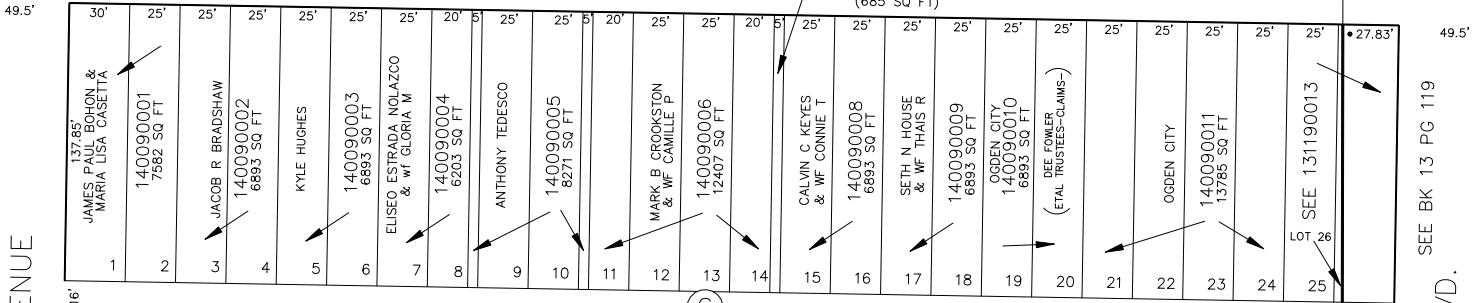
CALVIN & CONNIE KEYES

SEE PAGE 6

SCALE 1" = 50'

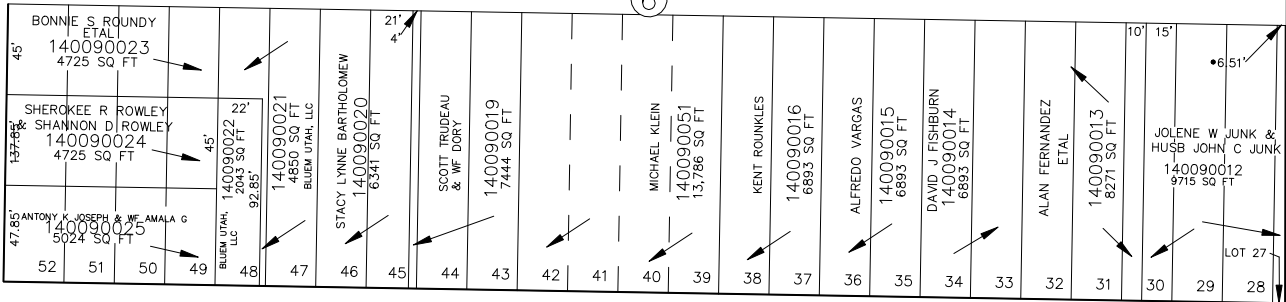
(140090007)  
(685 SQ FT)

STREET



AVENUE

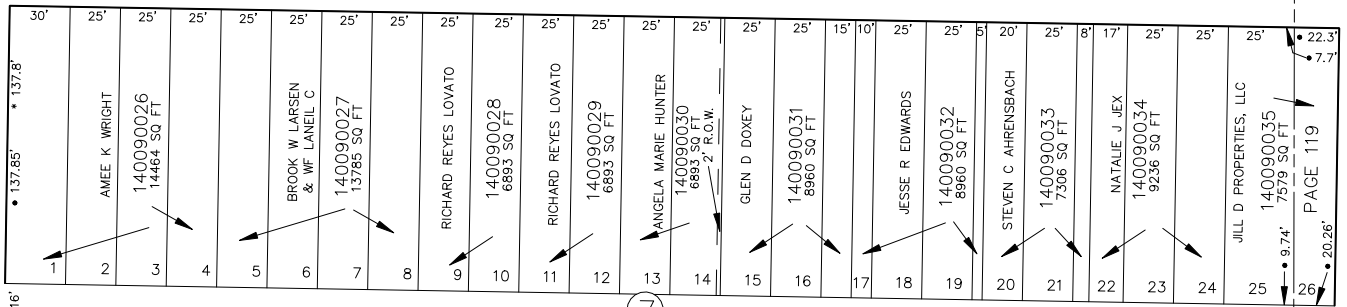
SEE BK 13 PG 119  
BLVD.



SEE BK 13 PG 119

OAK

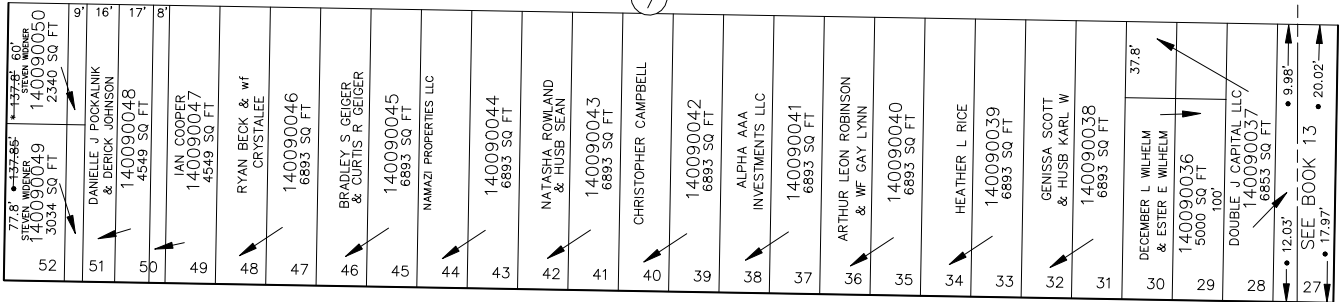
STREET



SEE BOOK 13, PAGE 119

VAN BUREN

HARRISON



SEE BOOK 13

• OGDEN CITY ENG. DEPT. PLATS  
• ORIG. DED. PLAT

SEE BOOK 2, PAGE 36

\*FOR TAX PURPOSES ONLY\*

S 89°22' E  
BM 4-94