

PART OF THE S.E. 1/4, SEC. 30, T.6N., R.1W., S.L.B. & M.

18

BROOKLYN ADDITION

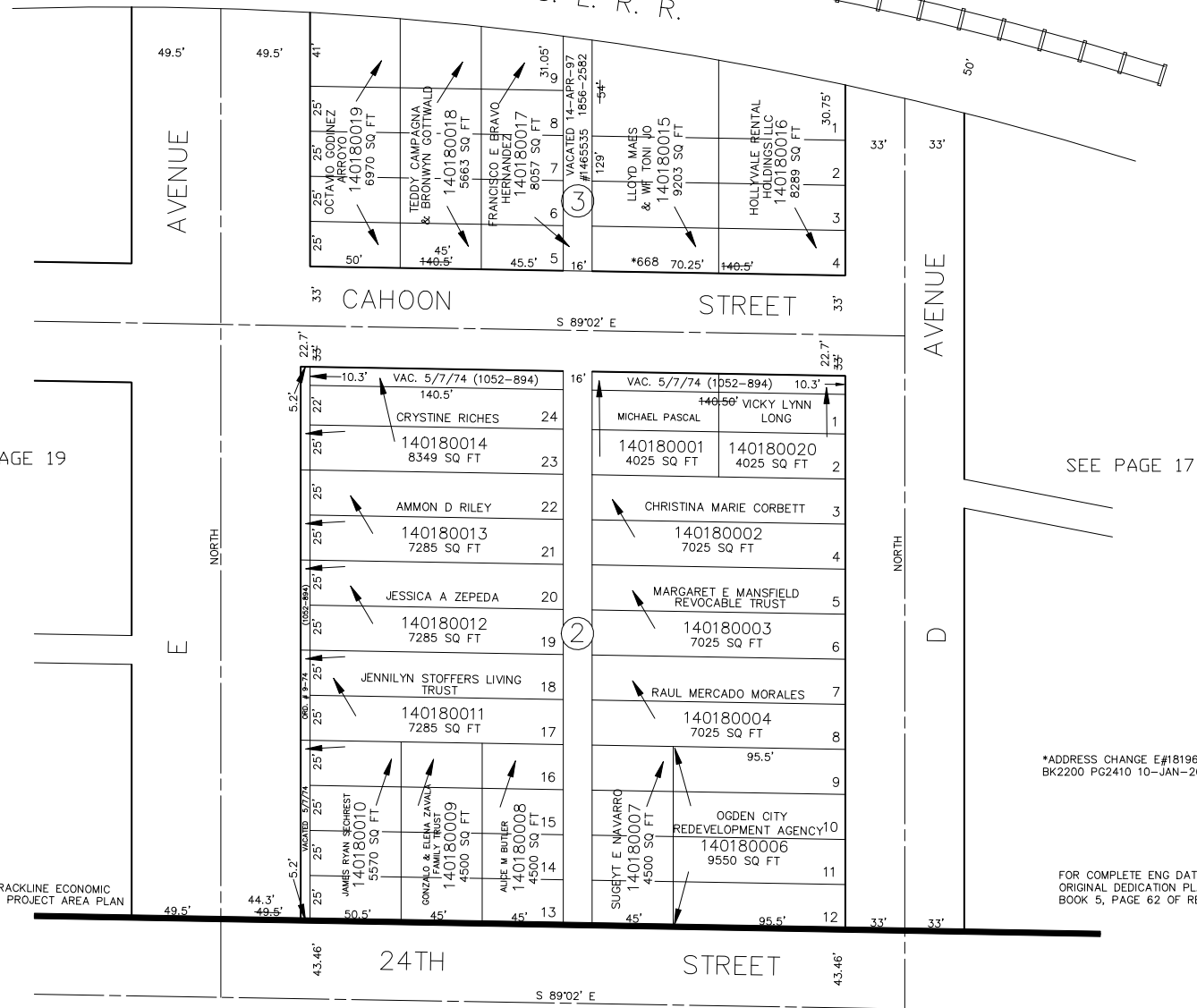
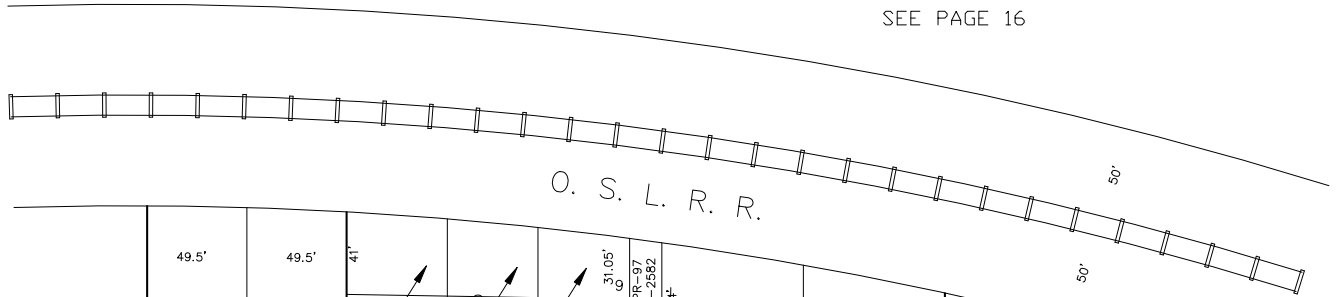
BLOCKS 2 & 3

TAXING UNIT: 486

IN OGDEN CITY

SCALE 1" = 50'

SEE PAGE 16



*ADDRESS CHANGE E#1819678
BK2200 PG2410 10-JAN-2002

FOR COMPLETE ENG DATA SEE
ORIGINAL DEDICATION PLAT IN
BOOK 5, PAGE 62 OF RECORDS.

SEE PAGE 26

DATA FROM OGDEN CITY ENG. DEPT. PLATS

FOR TAX PURPOSES ONLY

BM 4-94