

PART OF THE S. 1/2, SEC. 30, T.6N., R.1W., S.L.B. & M.

# BROOKLYN ADDITION

BLOCKS 8,9,14 & 15

TAXING UNIT: 25

SEE PAGE 20

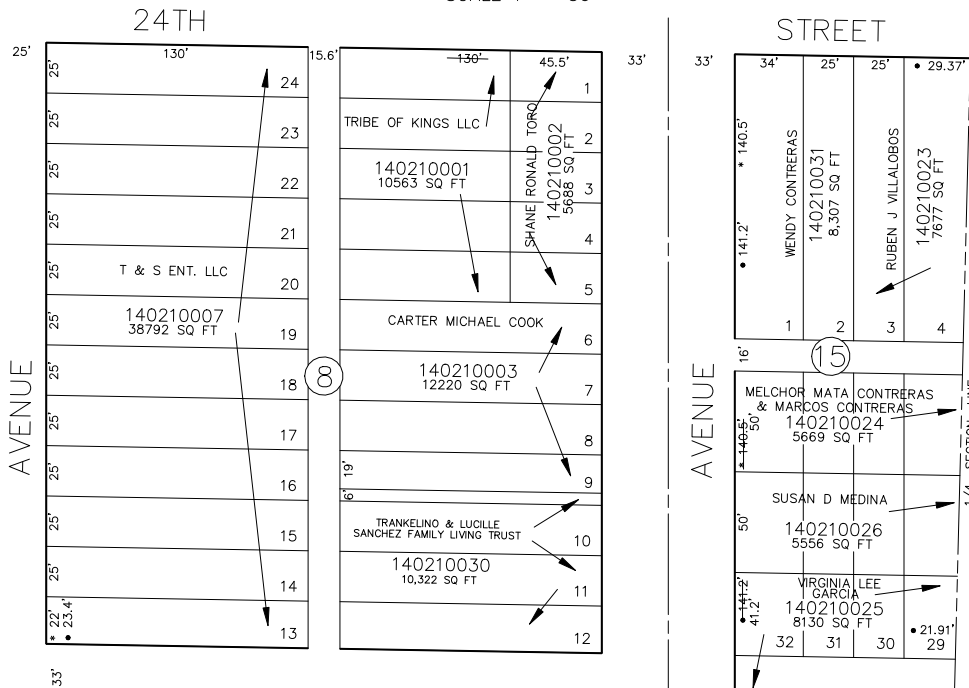
IN OGDEN CITY

SCALE 1" = 50'

SEE PAGE 19

24TH

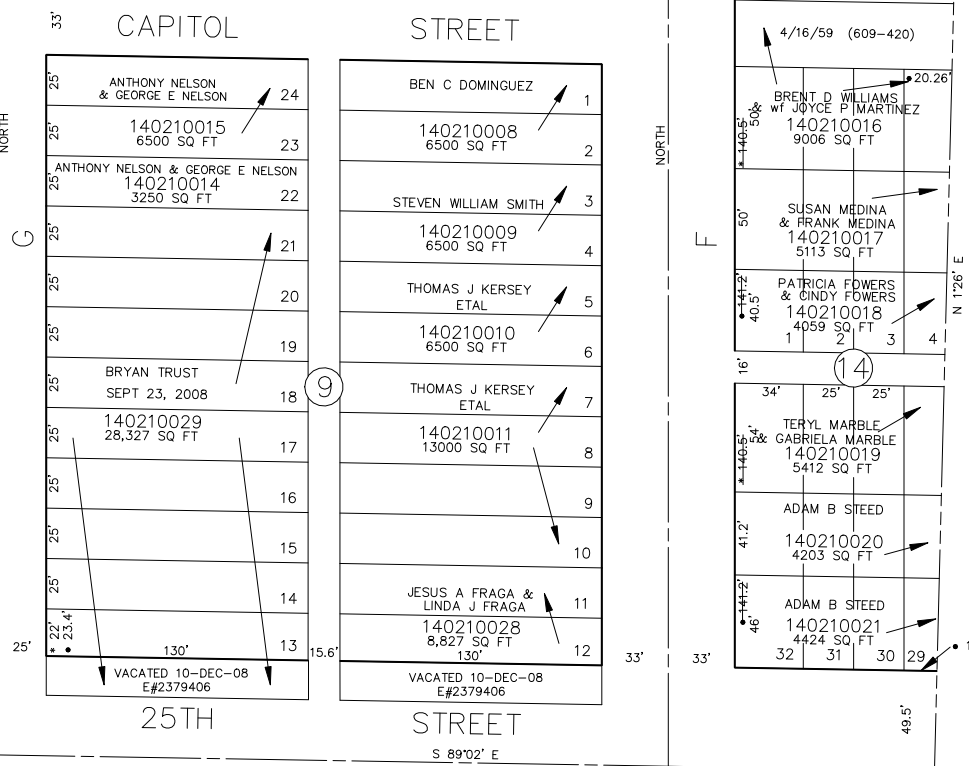
STREET



SEE PAGE 33

CAPITOL

STREET



SEE PAGE 26

25TH

STREET

SEE PAGE 22

\*FOR TAX PURPOSES ONLY\*

• OGDEN CITY ENG. DEPT. PLATS  
\* ORIG. DED. PLAT

FOR COMPLETE ENG DATA SEE  
ORIGINAL DEDICATION PLAT IN  
BOOK 5, PAGE 62 OF RECORDS.