

PART OF THE S.E. 1/4, SEC. 30, T.6N., R.1W., S.L.B. & M.

26

WEST OGDEN ADDITION

FOR COMPLETE ENG DATA SEE
ORIGINAL DEDICATION PLAT IN
BOOK 6, PAGE 18 OF RECORDS.

TAXING UNIT: 25

SEE PAGE 19

BLOCKS 2,3,4 & 5

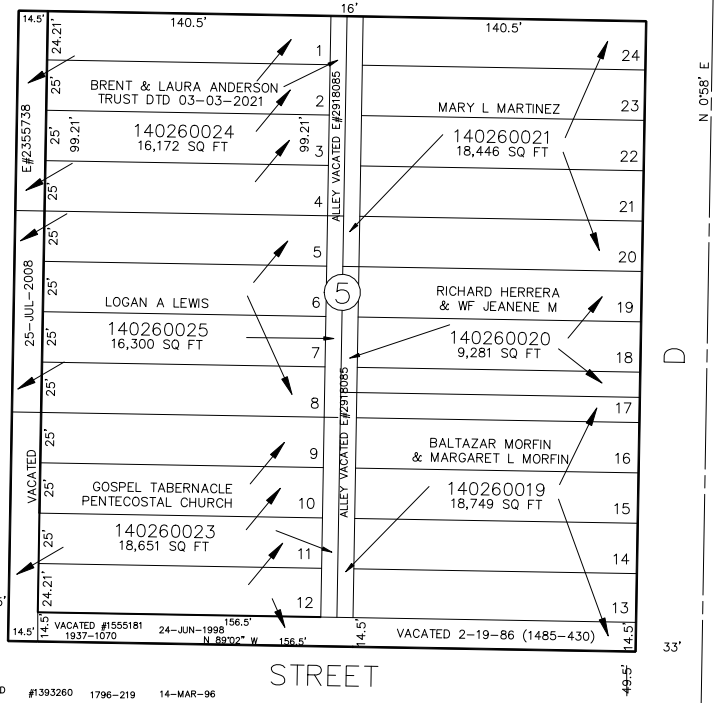
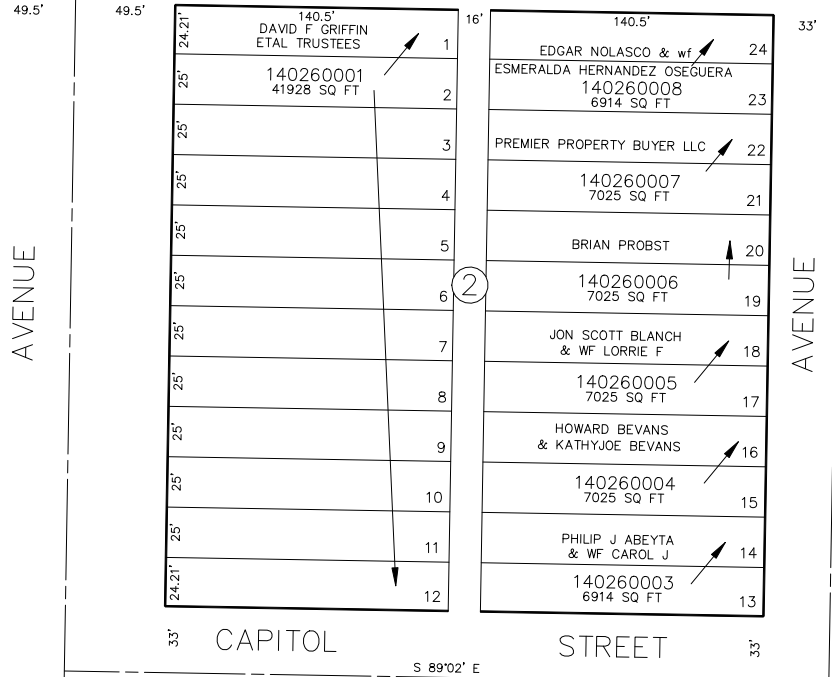
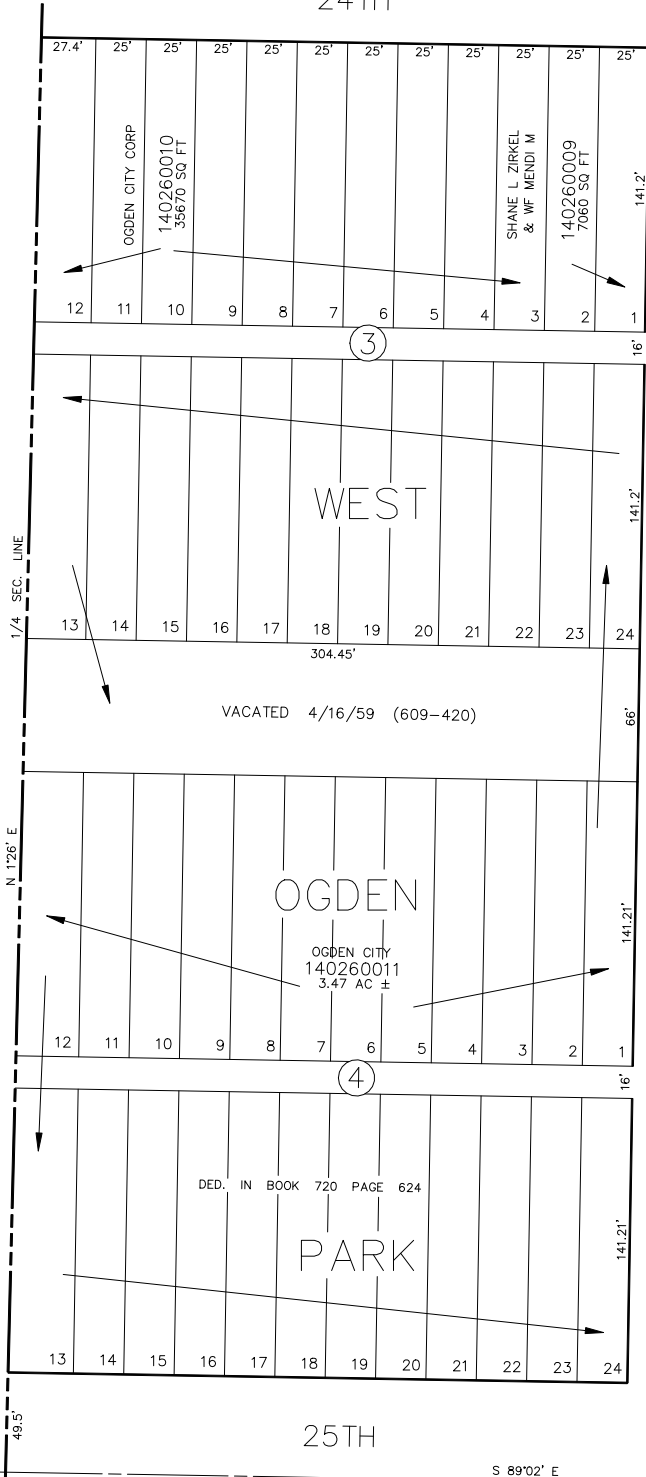
SEE PAGE 18

24TH

IN OGDEN CITY

SCALE 1" = 50'

STREET



14

SEE PAGE 29

FOR TAX PURPOSES ONLY

BM 4-94