

PART OF THE S.E. 1/4, SEC. 30, T.6N., R.1W., S.L.B. & M.

27

# WEST OGDEN ADDITION

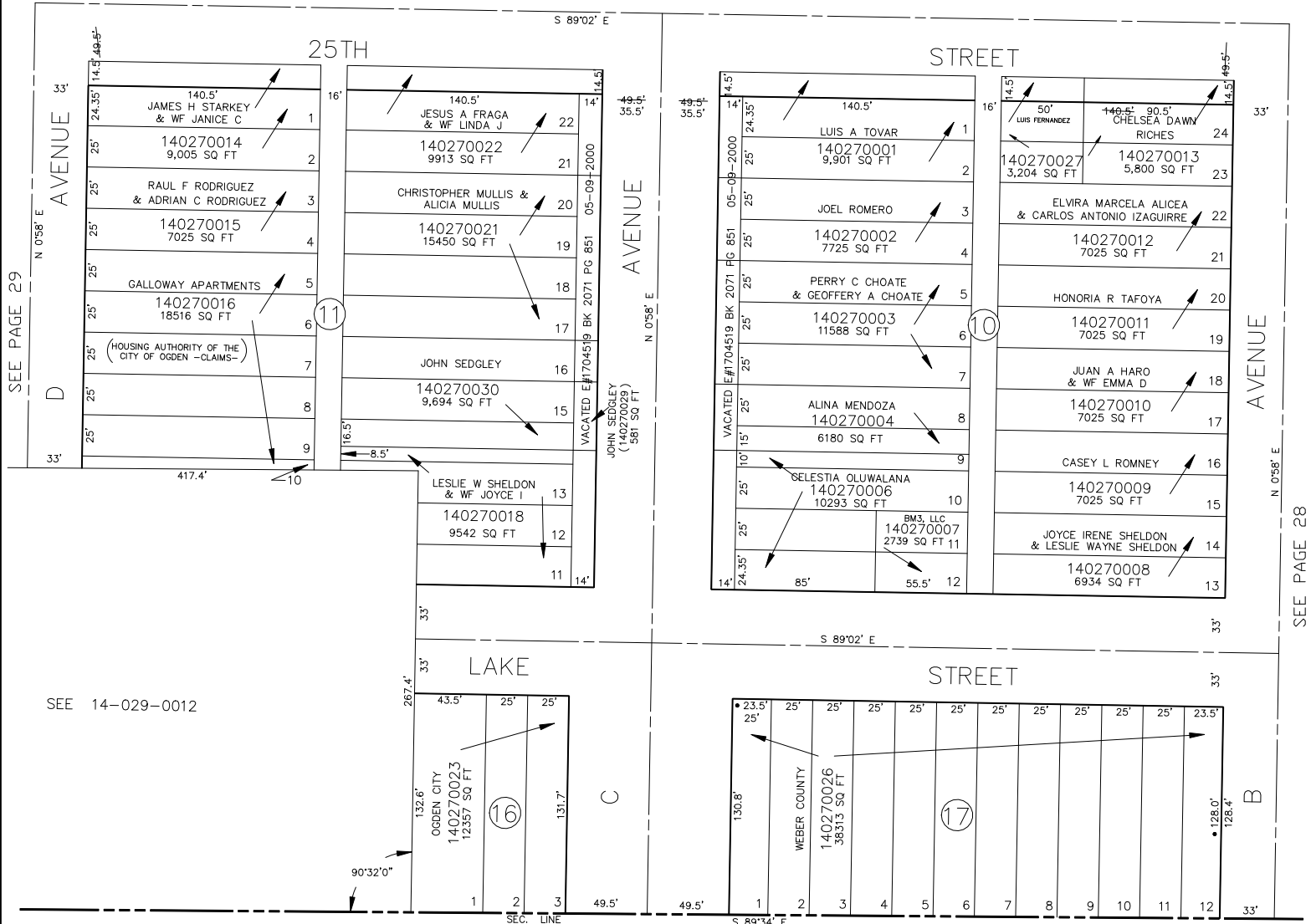
BLOCKS 10,11,16 & 17

TAXING UNIT: 25

IN OGDEN CITY

SCALE 1" = 50'

SEE PAGE 25



• OGDEN CITY ENG. DEPT. PLATS

SEE PAGE 39

FOR COMPLETE ENG DATA SEE  
ORIGINAL DEDICATION PLAT IN  
BOOK 6, PAGE 18 OF RECORDS.

ADDRESS AFFIDAVIT E#3037455