

PART OF THE S.E. 1/4, SEC. 30, T.6N., R.1W., S.L.B. & M.

WEST OGDEN ADDITION

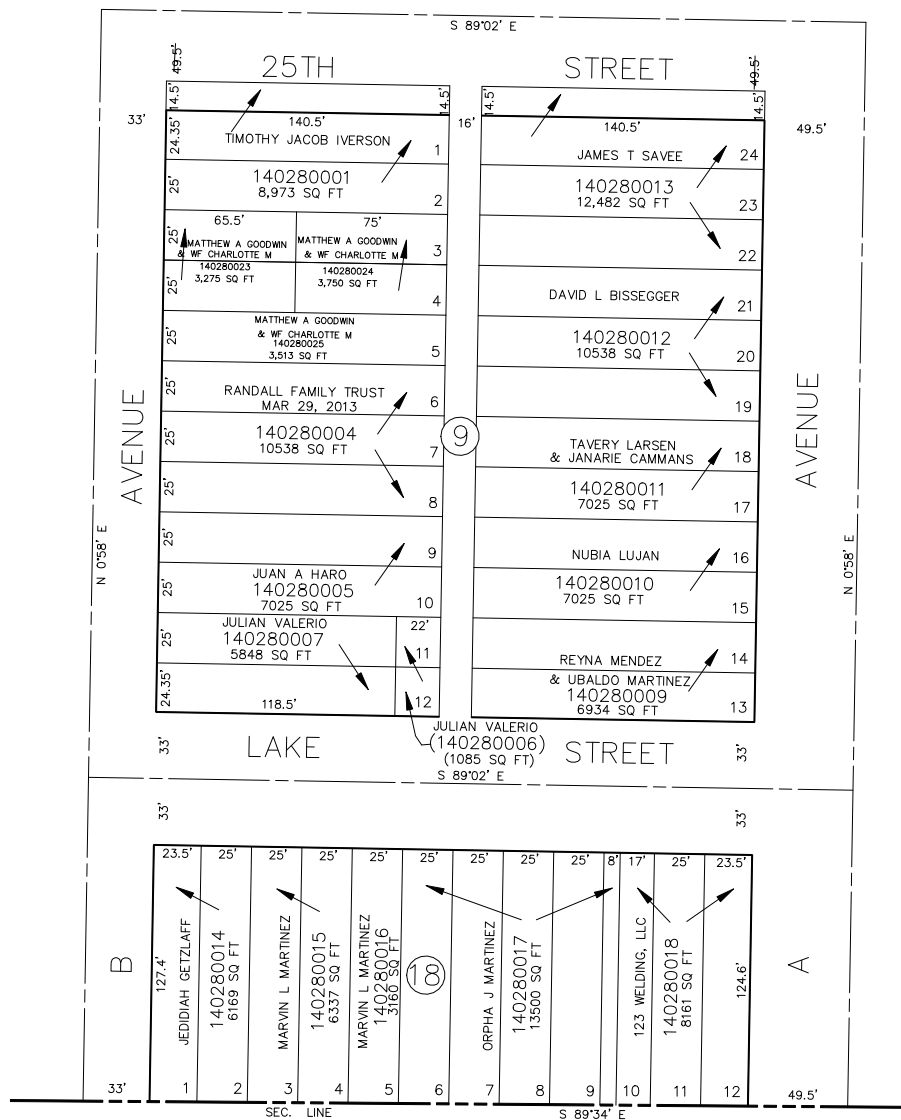
BLOCKS 9 & 18

IN OGDEN CITY

SCALE 1" = 50'

SEE PAGE 24

TAXING UNIT: 25



SEE PAGE 23

SEE PAGE 27

FOR COMPLETE ENG DATA SEE
ORIGINAL DEDICATION PLAT IN
BOOK 6, PAGE 18 OF RECORDS.

SEE PAGE 39

FOR TAX PURPOSES ONLY