

PART OF THE S.E. 1/4, SEC. 30, T.6N., R.1W., S.L.B. & M.

29

WEST OGDEN ADDITION

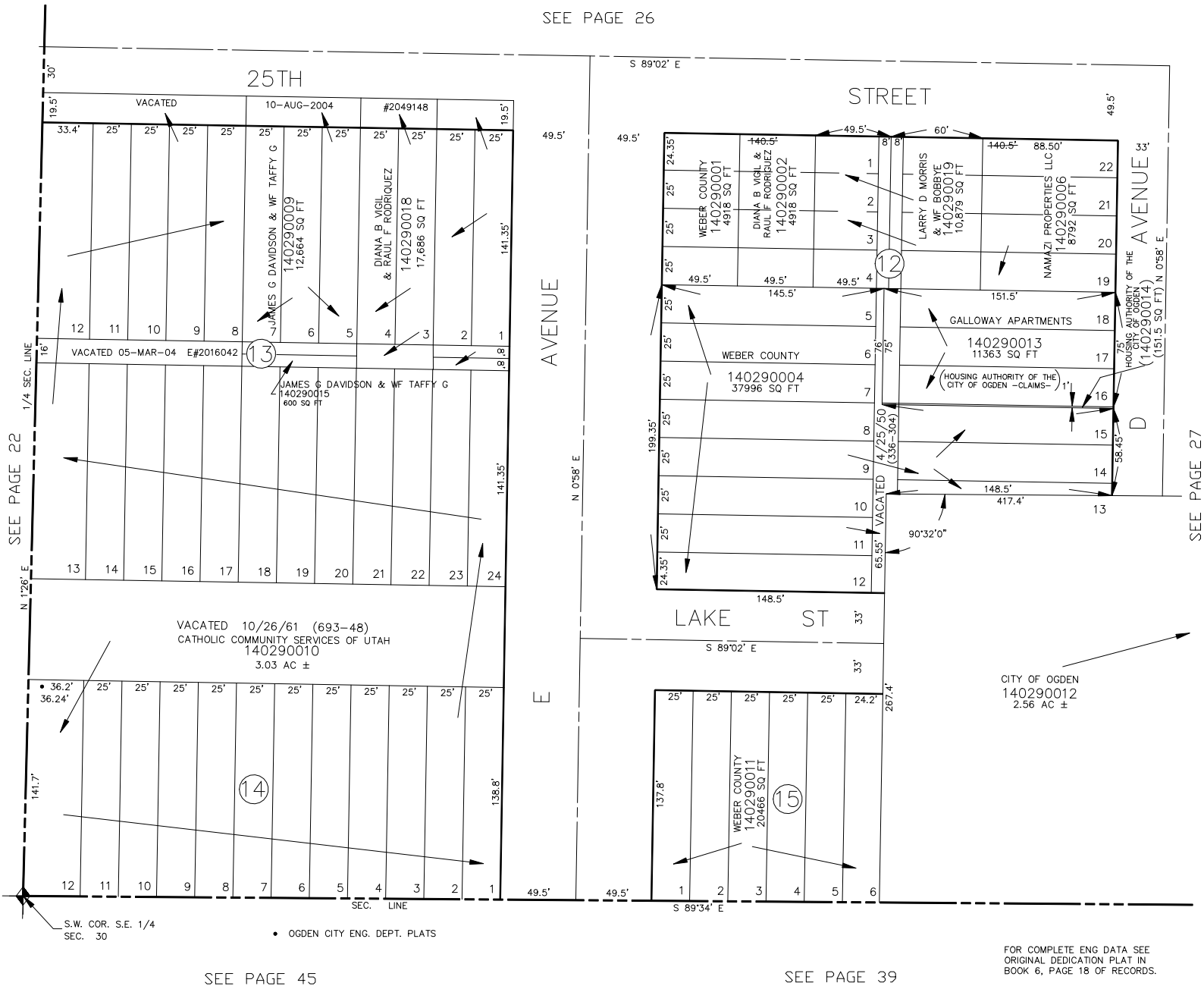
BLOCKS 12,13,14 & 15

TAXING UNIT: 25

IN OGDEN CITY

SCALE 1" = 50'

SEE PAGE 26



SEE PAGE 45

SEE PAGE 39

FOR TAX PURPOSES ONLY