

PART OF THE S.W. 1/4, SEC. 30, T.6N., R.1W., S.L.B. & M.

WEST OGDEN HEIGHTS

BLOCKS 1 & 2

TAXING UNIT: 25

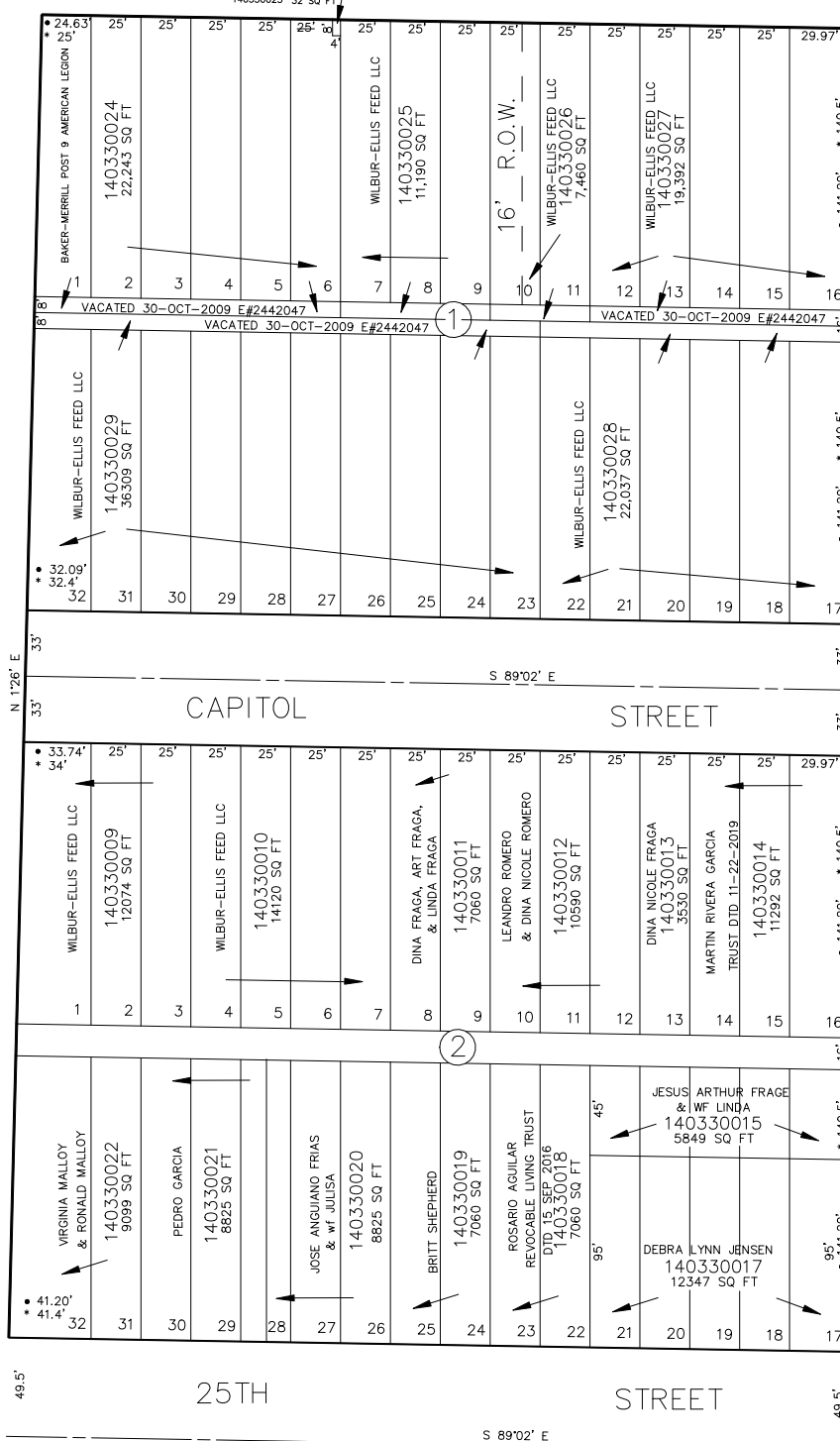
SEE PAGE 32

IN OGDEN CITY

SCALE 1" = 50'

24TH STREET

BAKER-MERRILL POST 9 AMERICAN LEGION
140330023 32 SQ FT



AVENUE

NORTH

G

- OGDEN CITY ENG. DEPT. PLATS
- ORIG. DED. PLAT

FOR COMPLETE ENG DATA SEE
ORIGINAL DEDICATION PLAT IN
BOOK 6, PAGE 28 OF RECORDS.

SEE PAGE 31

SEE PAGE 21

SEE PAGE 34

FOR TAX PURPOSES ONLY

BM 3-94