

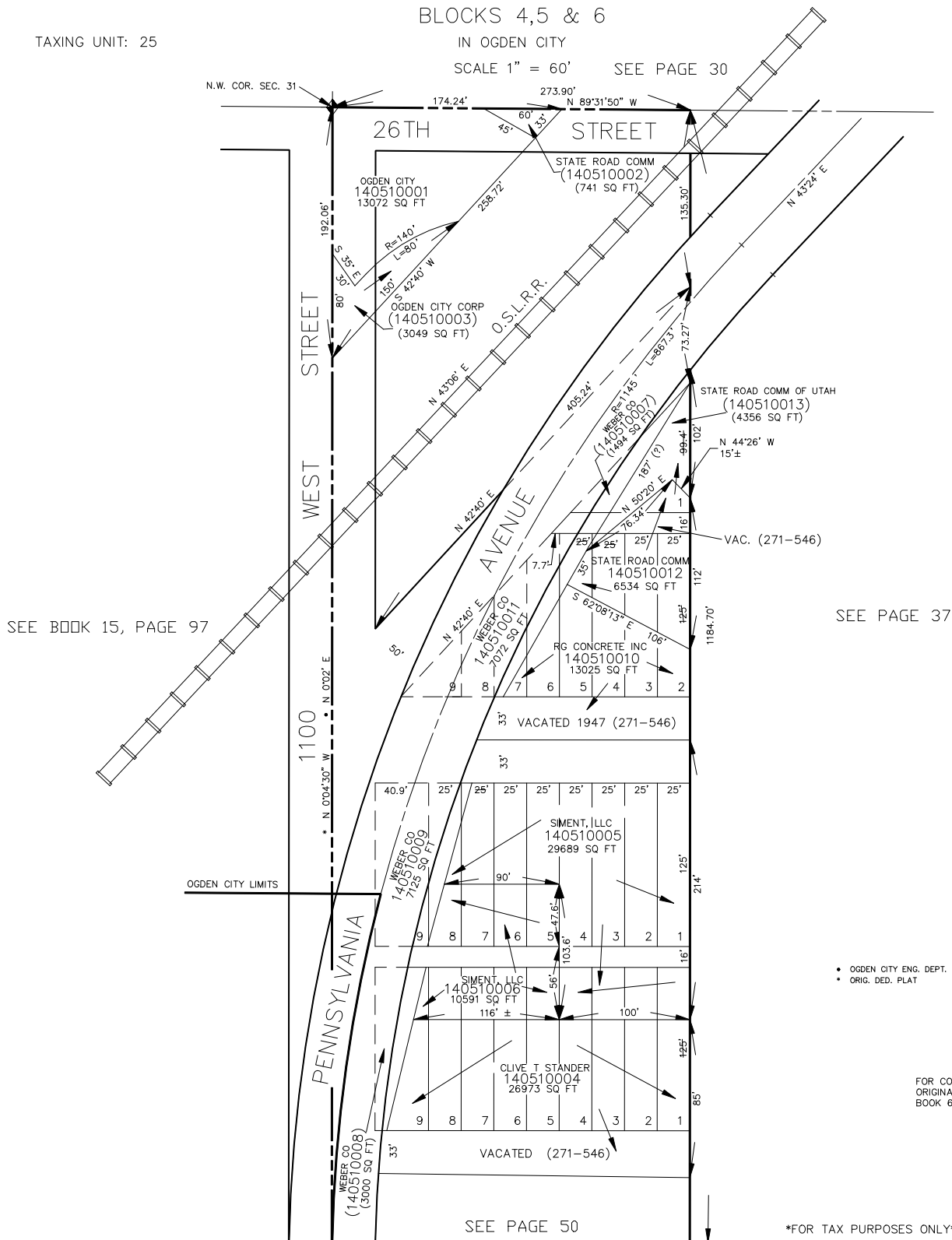
BLOCKS 4,5 & 6

IN OGDEN CITY

SCALE 1" = 60'

SEE PAGE 30

TAXING UNIT: 25



- OGDEN CITY ENG. DEPT. PLATS
- * ORIG. DED. PLAT

FOR COMPLETE ENG DATA SEE
ORIGINAL DEDICATION PLAT IN
BOOK 6, PAGE 11 OF RECORDS.

FOR TAX PURPOSES ONLY

BM 3-94