

PART OF THE S.W. 1/4, SEC. 34, T.6N., R.1W., S.L.B. & M.

70

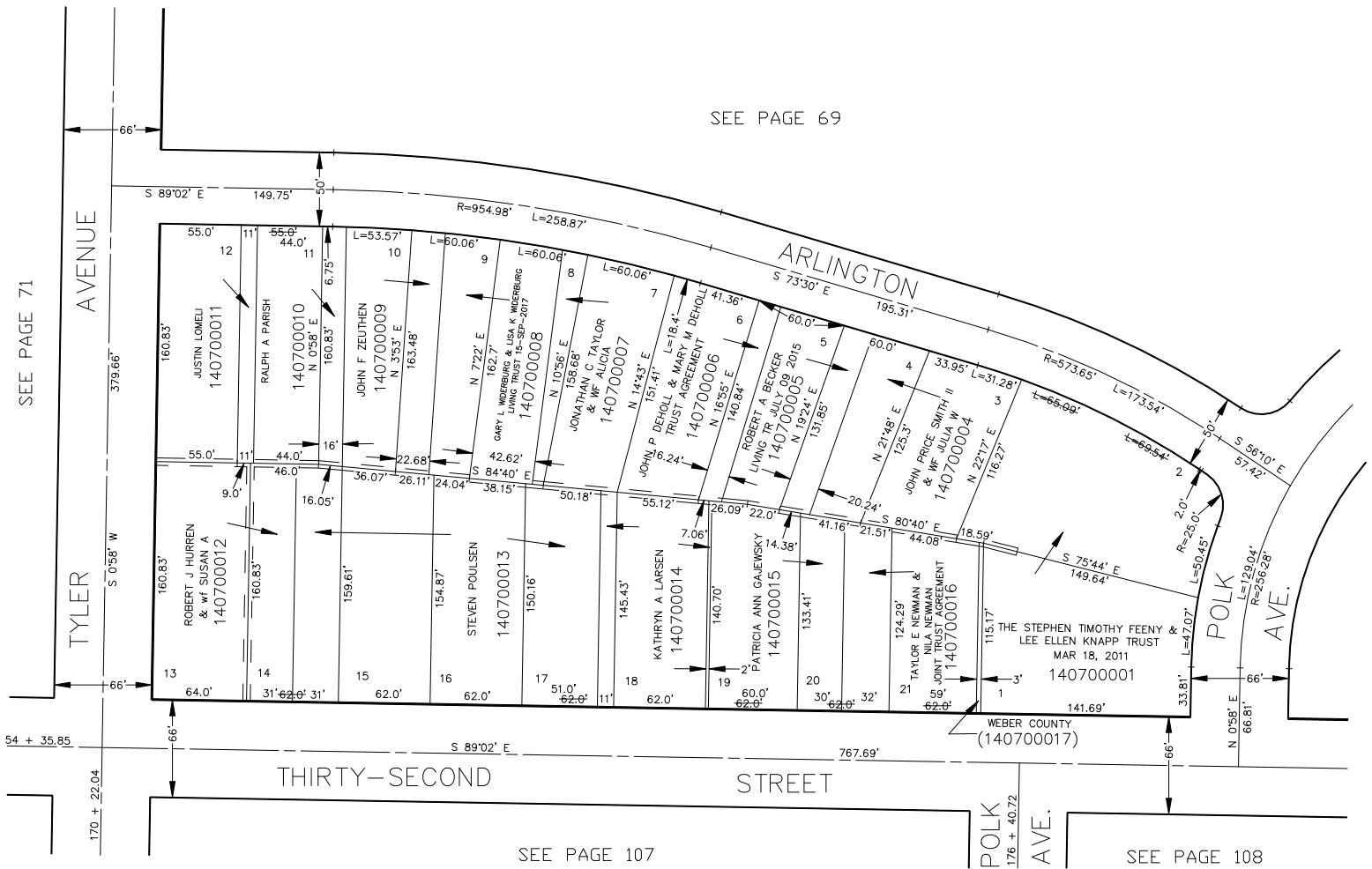
HILLCREST ADDITION

BLOCK 6
IN OGDEN CITY

TAXING UNIT: 25

SCALE 1" = 60'

SEE PAGE 69



FOR COMPLETE ENG DATA SEE
ORIGINAL DEDICATION PLAT IN
BOOK 9, PAGE 57 OF RECORDS.

FOR TAX PURPOSES ONLY