

PART OF THE S.E.1/4, SEC. 34, T.6N., R.1W., S.L.B. & M.

EAST BENCH AT 29TH.

A PRUD

LOTS 5-6, 20-26 AMD. LOTS 1-4 & COMMON AREA, AMD. LOTS 16,17,26 & COMMON AREA D

IN OGDEN CITY  
SCALE 1" = 60'

TAXING UNIT: 25

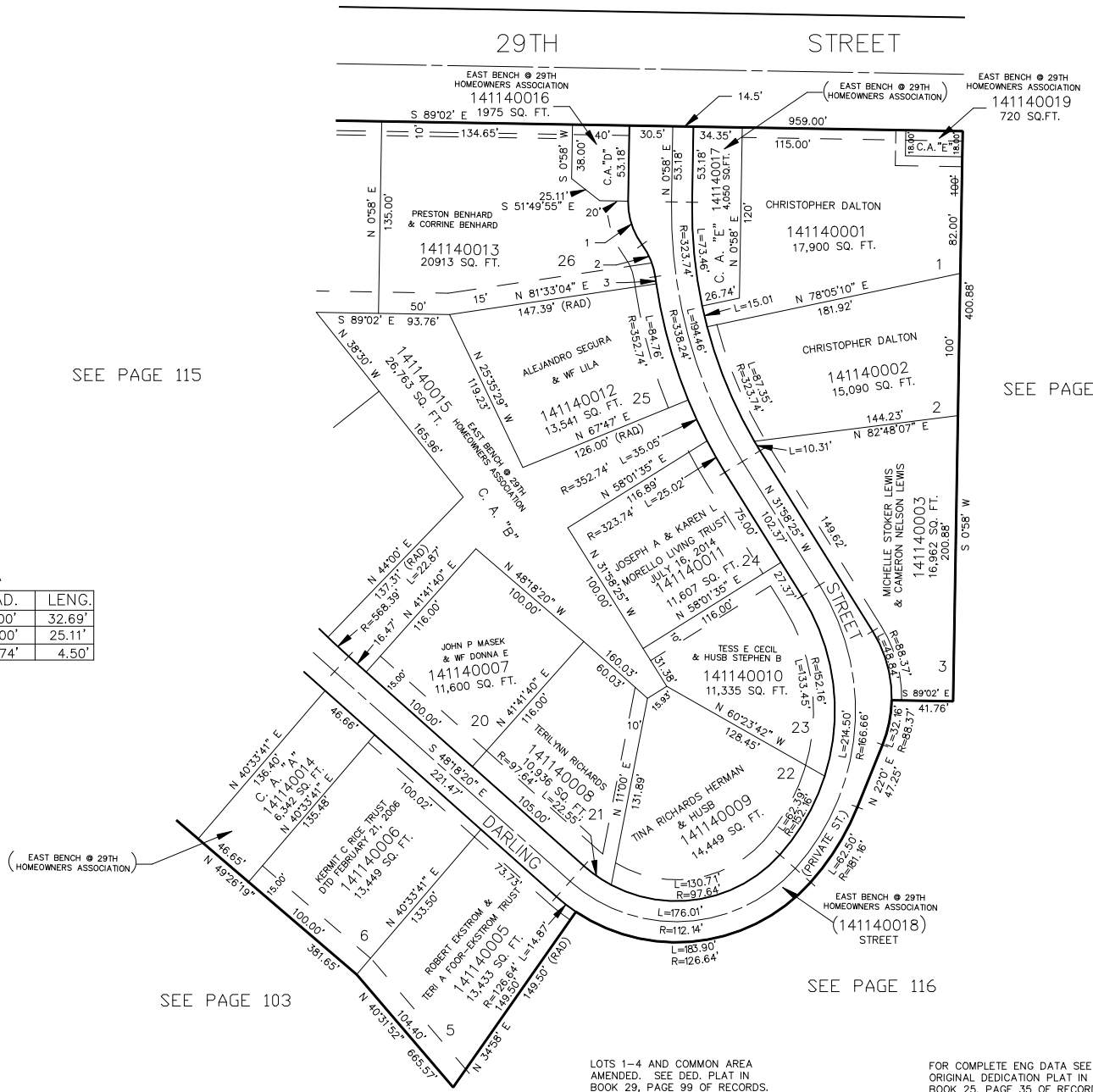
SEE PAGE 79

SEE PAGE 115

SEE PAGE 103

CURVE DATA

CURVE	RAD.	LENG.
1	50.00'	32.69'
2	50.00'	25.11'
3	352.74'	4.50'



7' UTILITY & DRAINAGE EASEMENTS EACH SIDE OF PROPERTY LINES AS INDICATED BY DASHED LINES EXCEPT AS OTHERWISE SHOWN.

\*FOR TAX PURPOSES ONLY\*

LOTS 1-4 AND COMMON AREA AMENDED. SEE DED. PLAT IN BOOK 29, PAGE 99 OF RECORDS.

ESMT. VACATED 9-10-87 (1529 - 1412)

LOTS 16,17,26 AND COMMON AREA D AMENDED. SEE DED. PLAT IN BOOK 38, PAGE 61 OF RECORDS.

AMD. LOTS 16,17,26 SEE DED. PLAT IN BOOK 42, PAGE 27 OF RECORDS.

FOR COMPLETE ENG DATA SEE ORIGINAL DEDICATION PLAT IN BOOK 25, PAGE 35 OF RECORDS.

AMD. LOT 1, OF THE AMD. PLAT OF LOTS 1-4 AND COMMON AREA E SEE DED. BOOK 42, PAGE 26 RECORDS.