

PART OF THE S.1/2, SEC. 34, T.6N., R.1W., S.L.B. & M.  
MOUNT OGDEN PARK CONDOMINIUMS PHASE 1

121

TAXING UNIT: 25

IN OGDEN CITY  
SCALE 1" = 30'

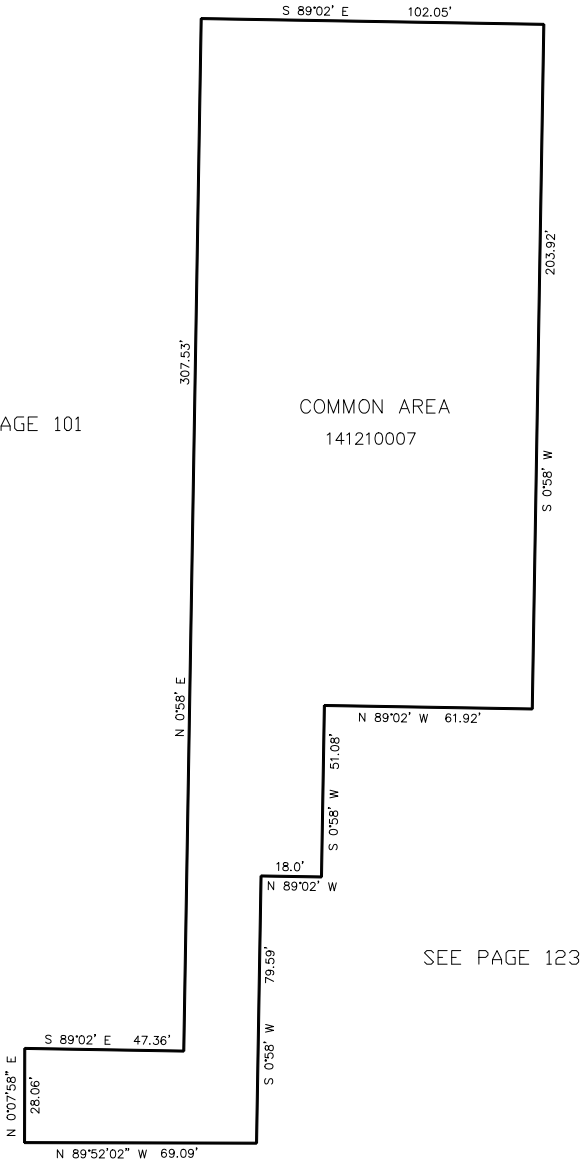
SEE PAGE 101

| UNIT | SERIAL NO. | NAMES OF OWNERSHIP             |
|------|------------|--------------------------------|
| 1    | 141210001  | OSCAR E ALVAREZ                |
| 2    | 141210002  | 2973 TAYLOR AVE NO 2 LLC       |
| 3    | 141210003  | CR3 PROPERTIES, LLC            |
| 4    | 141210004  | ROBERT M GUILLER & wf ANDREA L |
| 5    | 141210005  | JENSEN FAMILY TRUST            |
| 6    | 141210006  | 2973 TAYLOR AVE NO 6 LLC       |

SEE PAGE 101

SEE PAGE 62

SEE PAGE 125



SEE PAGE 123

SEE PAGE 101

FOR COMPLETE ENG DATA SEE  
ORIGINAL DEDICATION PLAT IN  
BOOK 26, PAGES 49 & 50  
OF RECORDS.