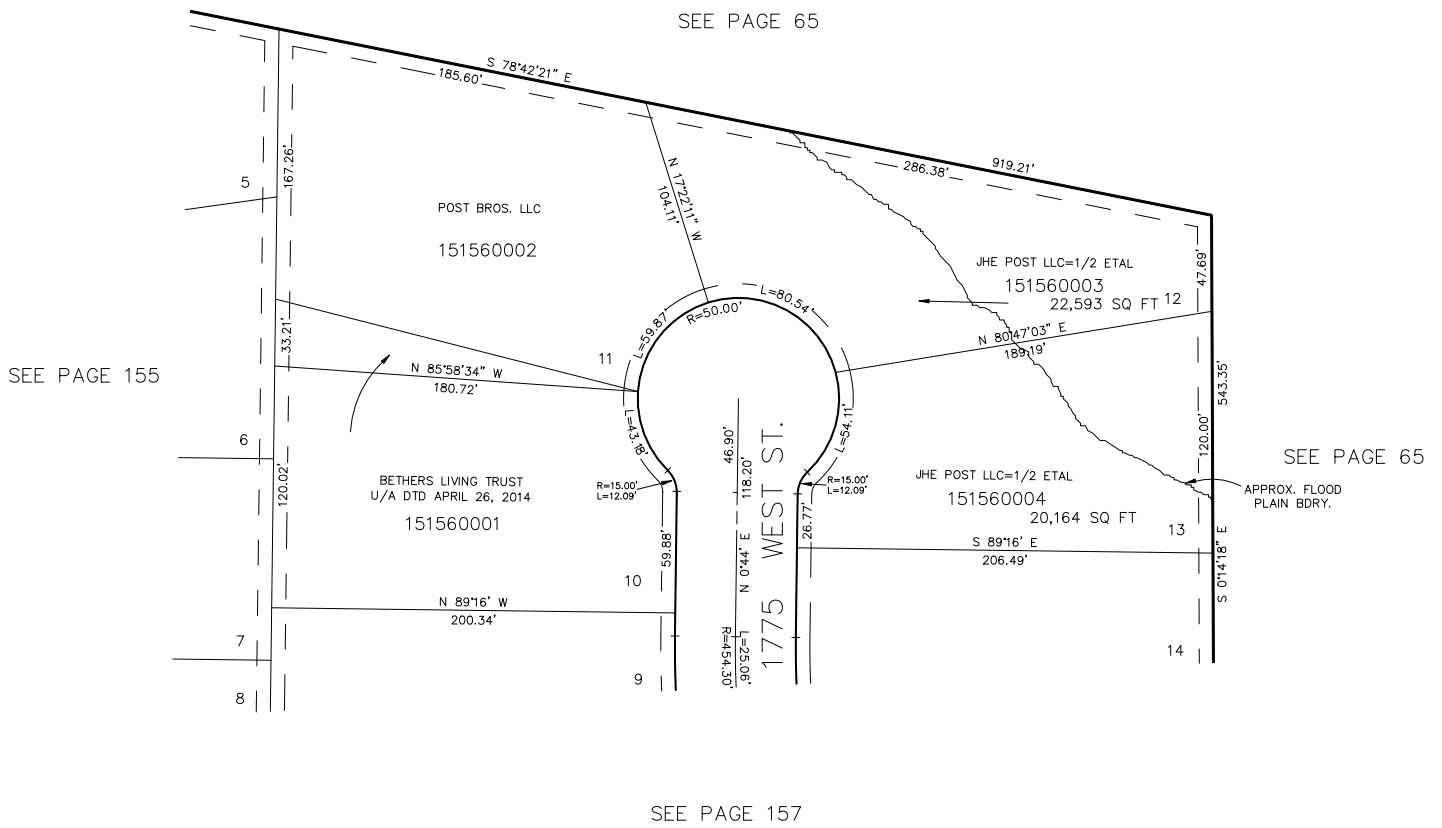


PART OF SEC. 24, T.6N., R.2W., S.L.B. & M.
RIVERSIDE INDUSTRIAL PARK
 LOTS 10-13
 IN WEBER COUNTY
 SCALE 1" = 50'

156

TAXING UNIT: 16



7' UTILITY & DRAINAGE EASEMENTS EACH
 SIDE OF PROPERTY LINES AS INDICATED
 BY DASHED LINES EXCEPT AS OTHERWISE
 SHOWN.

FOR COMPLETE ENG DATA SEE
 ORIGINAL DEDICATION PLAT IN
 BOOK 23, PAGE 50 OF RECORDS.