

PART OF THE S.E. 1/4, SEC. 11, T.6N., R.2W., S.L.B. & M.
GRASSLANDS ESTATES SUBDIVISION

IN WEBER COUNTY

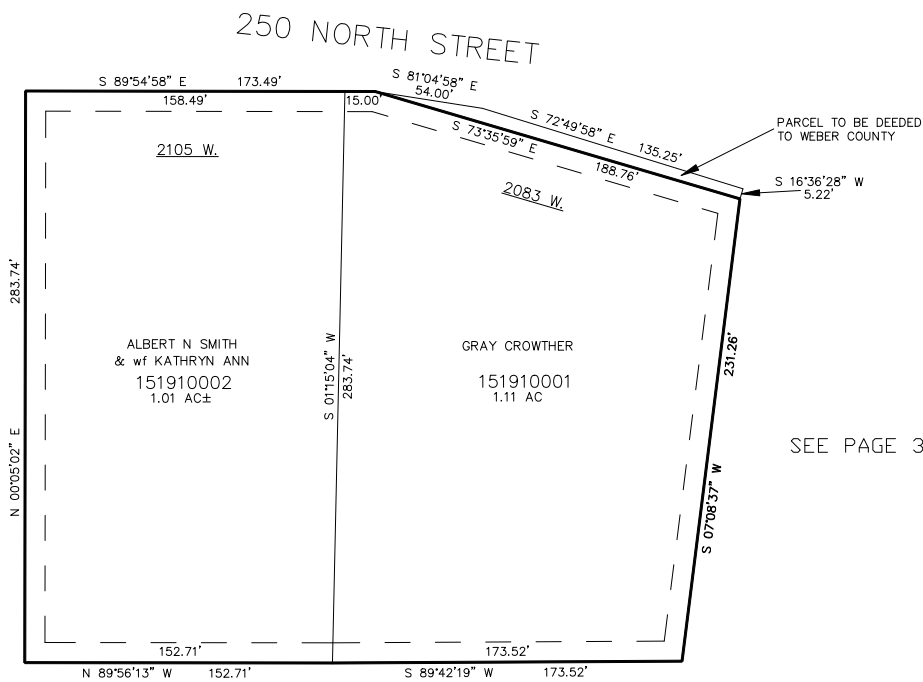
TAXING UNIT: 16

SCALE 1" = 50'

SEE PAGE 30-2

SEE PAGE 30-2

SEE PAGE 30-2



SEE PAGE 30-2

FOR COMPLETE ENG DATA SEE
 ORIGINAL DEDICATION PLAT IN
 BOOK 38, PAGE 84 OF RECORDS.