

PART OF THE N.E. 1/4, OF SEC. 10, T.6N., R.2W., S.L.B. & M.

## BUCKS SUBDIVISION-AMENDED

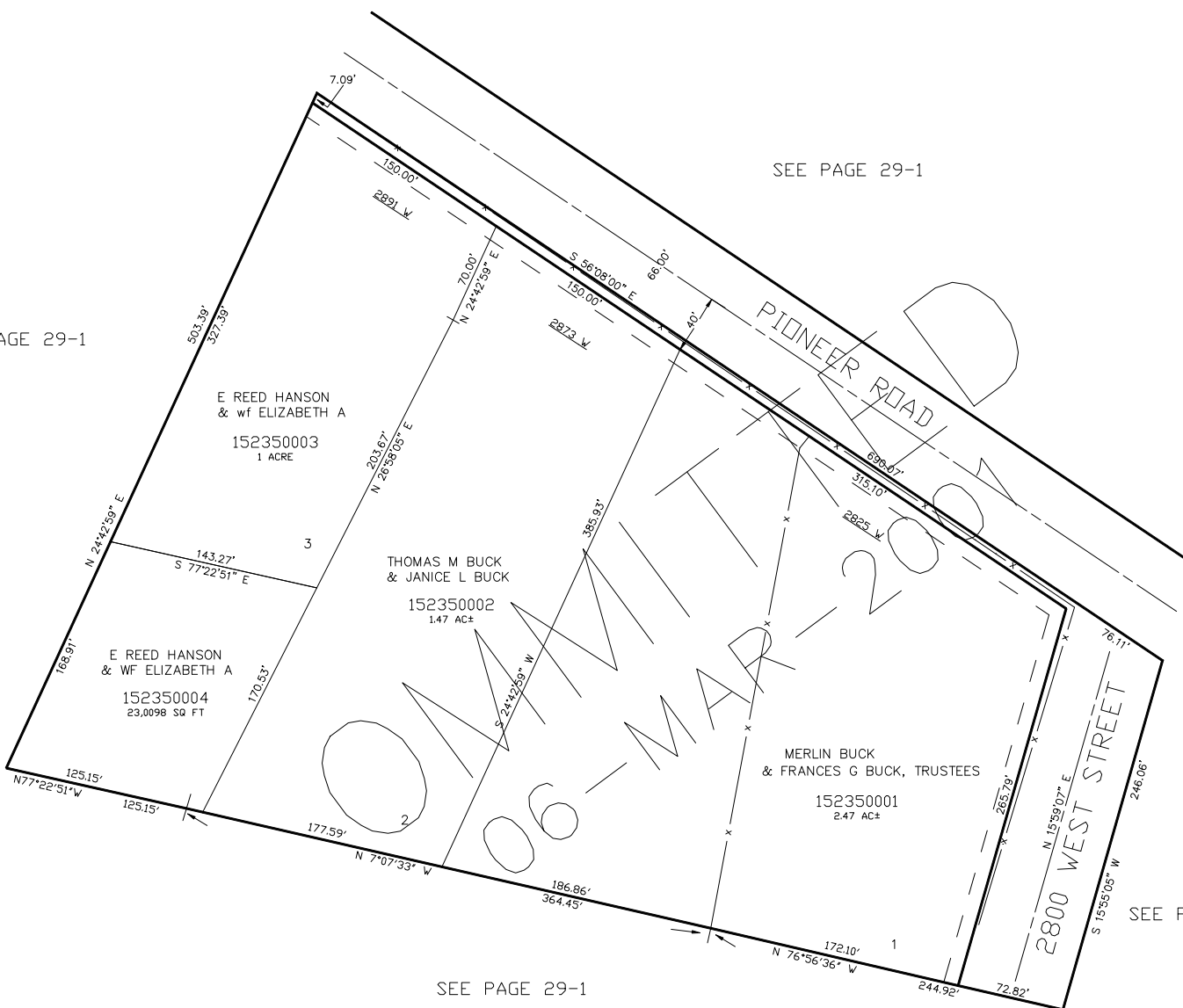
IN WEBER COUNTY

SCALE 1" = 60'

TAXING UNIT: 16

SEE PAGE 29-1

SEE PAGE 29-1



SEE PAGE 29-1

SEE PAGE 29-1

10' UTILITY & DRAINAGE EASEMENTS EACH  
SIDE OF PROPERTY LINES AS INDICATED  
BY DASHED LINES EXCEPT AS OTHERWISE  
SHOWN.

FOR COMPLETE ENG DATA SEE  
ORIGINAL DEDICATION PLAT IN  
BOOK 48, PAGE 8 OF RECORDS.