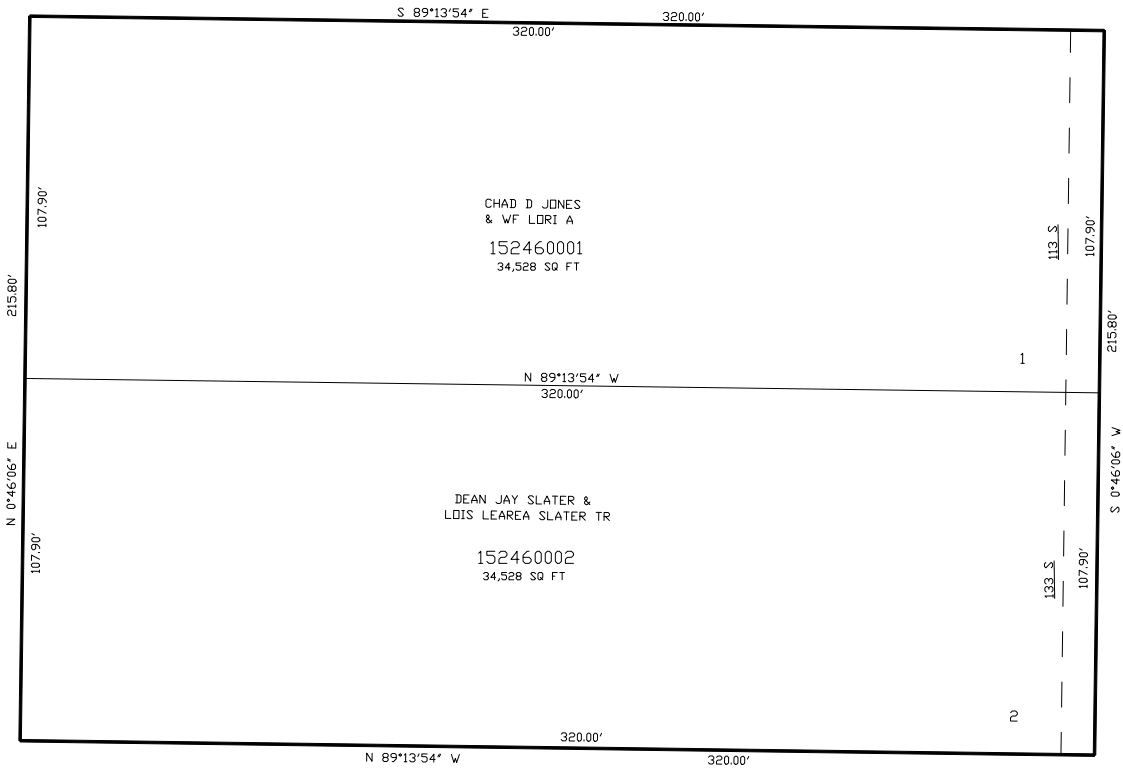


PART OF THE NE.1/4, OF SECTION 13, T.6N., R.2W., S.L.B. & M.  
**ADDIE LANE SUBDIVISION**

IN WEBER COUNTY  
SCALE 1" = 30'

TAXING UNIT: 17

SEE PAGE 184



SEE PAGE 184

SEE PAGE 184

SEE PAGE 35

10' UTILITY & DRAINAGE EASEMENTS EACH  
SIDE OF PROPERTY LINES AS INDICATED  
BY DASHED LINES EXCEPT AS OTHERWISE  
SHOWN.

FOR COMPLETE ENG DATA SEE  
ORIGINAL DEDICATION PLAT IN  
BOOK 49, PAGE 57 OF RECORDS.