

PART OF THE S.W.1/4, OF SECTION 28, T.6N., R.2W., S.L.B. & M.
HADLEY & OSMOND ESTATES

270

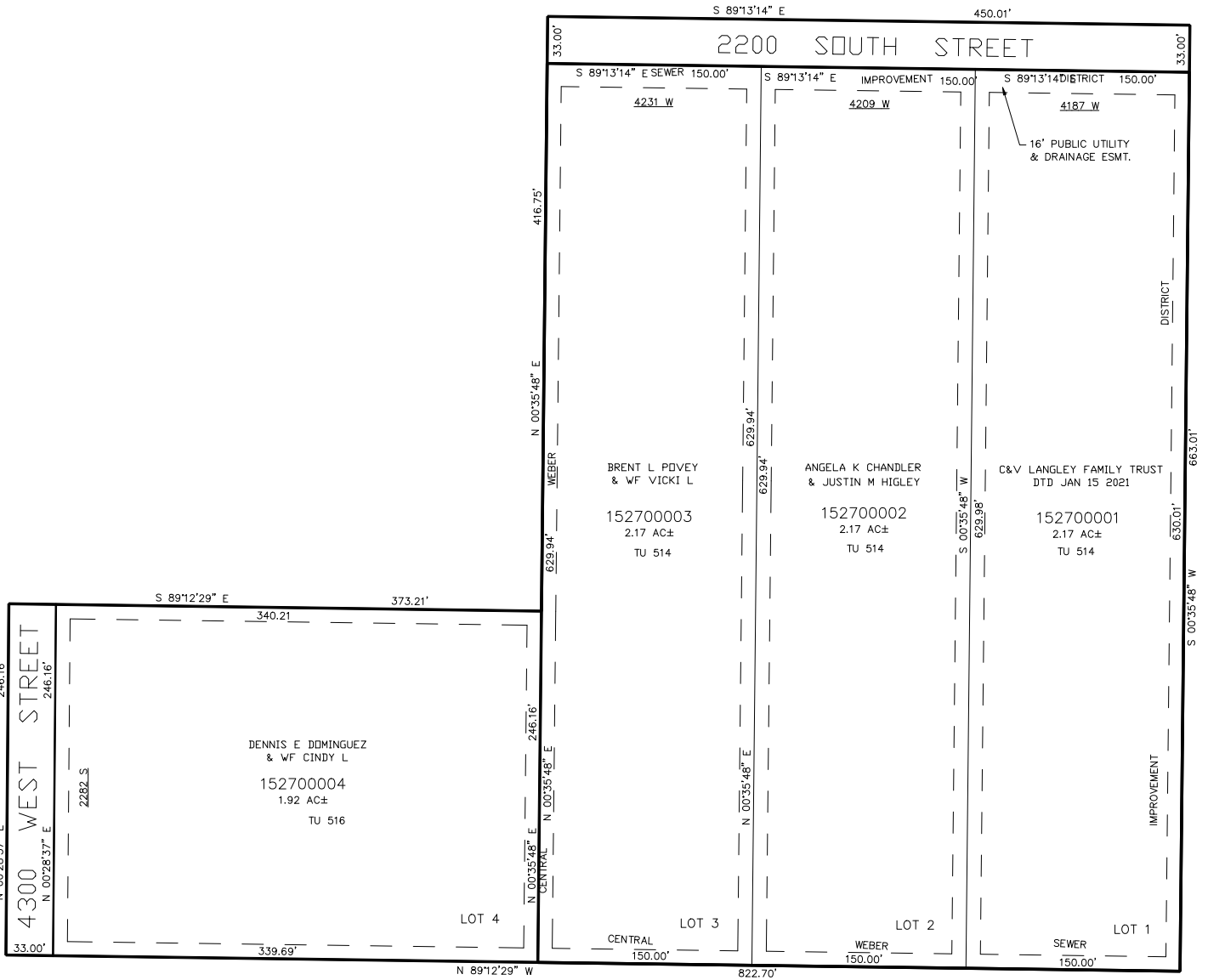
TAXING UNIT: 514,516

IN WEBER COUNTY

SCALE 1" = 60'

SEE PAGE 78-3

SEE
PAGE
78-3



SEE
PAGE
78-3

SEE PAGE 78-3

FOR COMPLETE ENG DATA SEE
 ORIGINAL DEDICATION PLAT IN
 BOOK 51, PAGE 88 OF RECORDS.

10' UTILITY & DRAINAGE EASEMENTS EACH
 SIDE OF PROPERTY LINES AS INDICATED
 BY DASHED LINES EXCEPT AS OTHERWISE
 SHOWN.

FOR TAX PURPOSES ONLY