

PART OF THE S.E 1\4, OF SECTION 29, T.6N., R.2W S.L.B. & M.  
**OLSEN ESTATES SUBDIVISION**

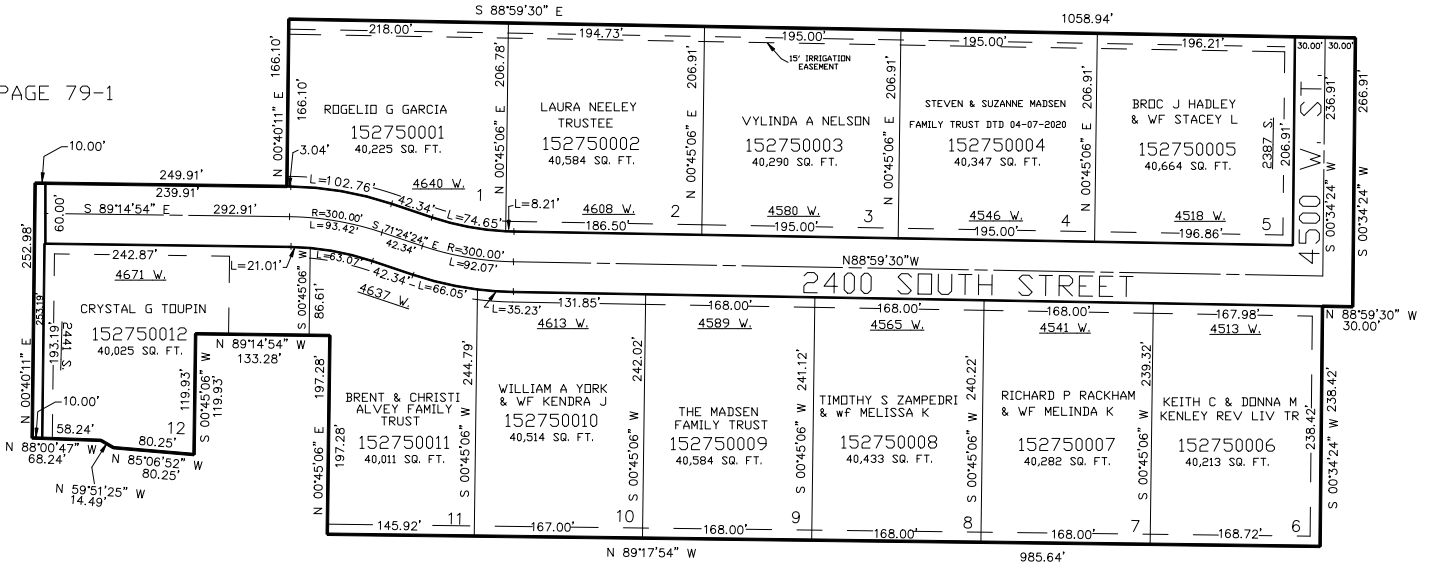
IN WEBER COUNTY  
SCALE 1" = 100'

TAXING UNIT: 516

SEE PAGE 79-1

SEE PAGE 79-1

4700 W. ST.



SEE PAGE 79-1

SEE PAGE 79-1

FOR COMPLETE ENG DATA SEE  
ORIGINAL DEDICATION PLAT IN  
BOOK 52, PAGE 58 OF RECORDS.

10' UTILITY & DRAINAGE EASEMENTS EACH  
SIDE OF PROPERTY LINES AS INDICATED  
BY DASHED LINES EXCEPT AS OTHERWISE  
SHOWN.

\*FOR TAX PURPOSES ONLY\*