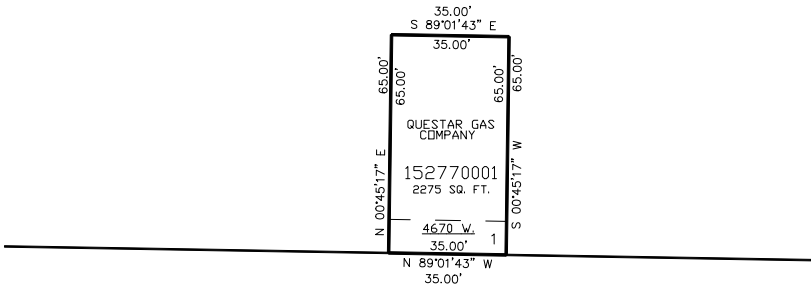


PART OF THE N.E. 1\4, OF SECTION 20, T.6N., R.2W., S.L.B. & M.
OGDEN REG. STATION WA1356

IN WEBER COUNTY
SCALE 1" = 30'

TAXING UNIT: 516

SEE PAGE 55



SEE PAGE 55

1150 S (HWY 39)

SEE PAGE 55



SEE PAGE 55

10' UTILITY & DRAINAGE EASEMENTS EACH
SIDE OF PROPERTY LINES AS INDICATED
BY DASHED LINES EXCEPT AS OTHERWISE
SHOWN.

FOR COMPLETE ENG DATA SEE
ORIGINAL DEDICATION PLAT IN
BOOK 52, PAGE 86 OF RECORDS.