

PART OF THE S.W. 1/4, OF SECTION 5, T.6N., R.2W., S.L.B. & M.

289

RIVER RUN SUBDIVISION

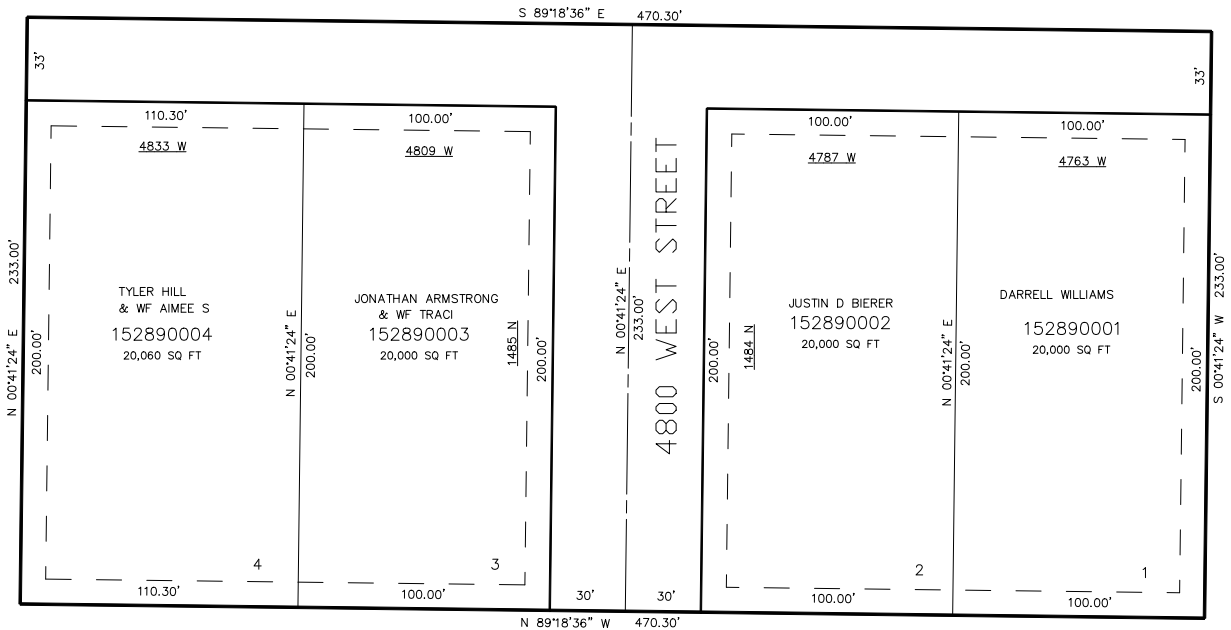
IN PLAIN CITY

TAXING UNIT: 21

SCALE 1" = 40'

SEE PAGE 18

1500 NORTH STREET



SEE PAGE 17

10' UTILITY & DRAINAGE EASEMENTS EACH
SIDE OF PROPERTY LINES AS INDICATED
BY DASHED LINES EXCEPT AS OTHERWISE
SHOWN.

*NOTE PER DED PLAT EASEMENTS TO BE
USES FOR IRRIGATION, WATER LINES,
DRAINAGE, SANTARY AND STORM SEWERS,
TELEPHONE LINES AND OTHER UTILITIES

FOR COMPLETE ENG DATA SEE
ORIGINAL DEDICATION PLAT IN
BOOK 53, PAGE 55 OF RECORDS.

FOR TAX PURPOSES ONLY