

PART OF THE SW.1/4, OF SECTION 28, T.6N., R.2W., S.L.B. & M.
CALMING WATERS AT PETERSON ESTATES

IN WEBER COUNTY
SCALE 1" = 30'

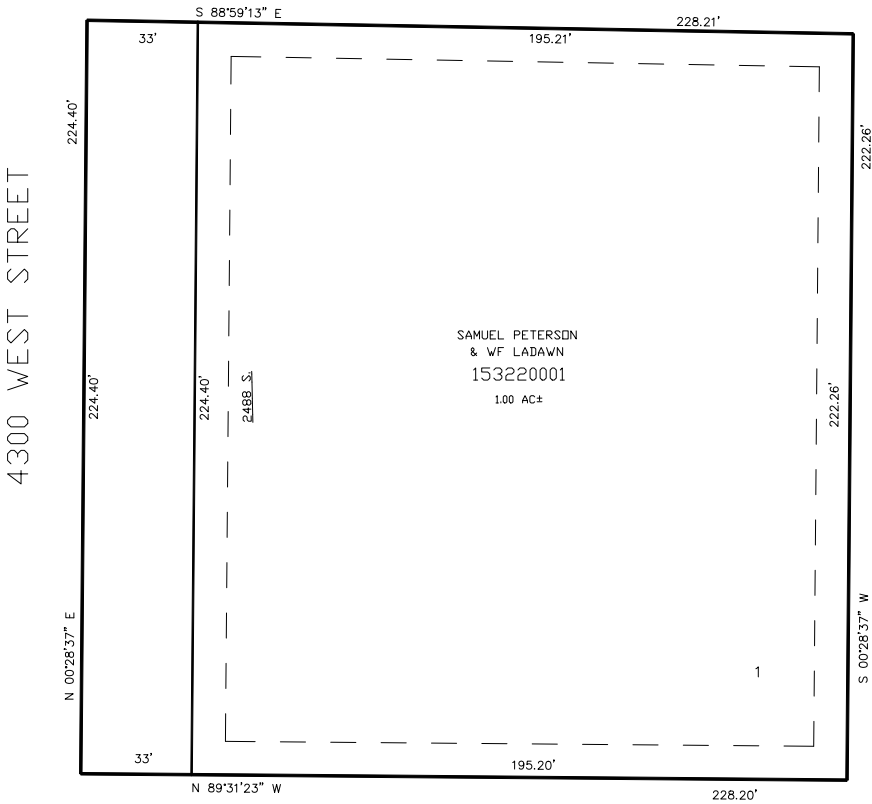
TAXING UNIT: 516

SEE PAGE 304

2475 SOUTH STREET

SEE PAGE 79-1

SEE PAGE 78-3



SEE PAGE 78-3

10' UTILITY & DRAINAGE EASEMENTS EACH
SIDE OF PROPERTY LINES AS INDICATED
BY DASHED LINES EXCEPT AS OTHERWISE
SHOWN.

FOR COMPLETE ENG DATA SEE
ORIGINAL DEDICATION PLAT IN
BOOK 55, PAGE 82 OF RECORDS.