

PART OF THE SW.1/4, OF SECTION 22, T.6N., R.2W., S.L.B. & M.

# PAINTER SUBDIVISION

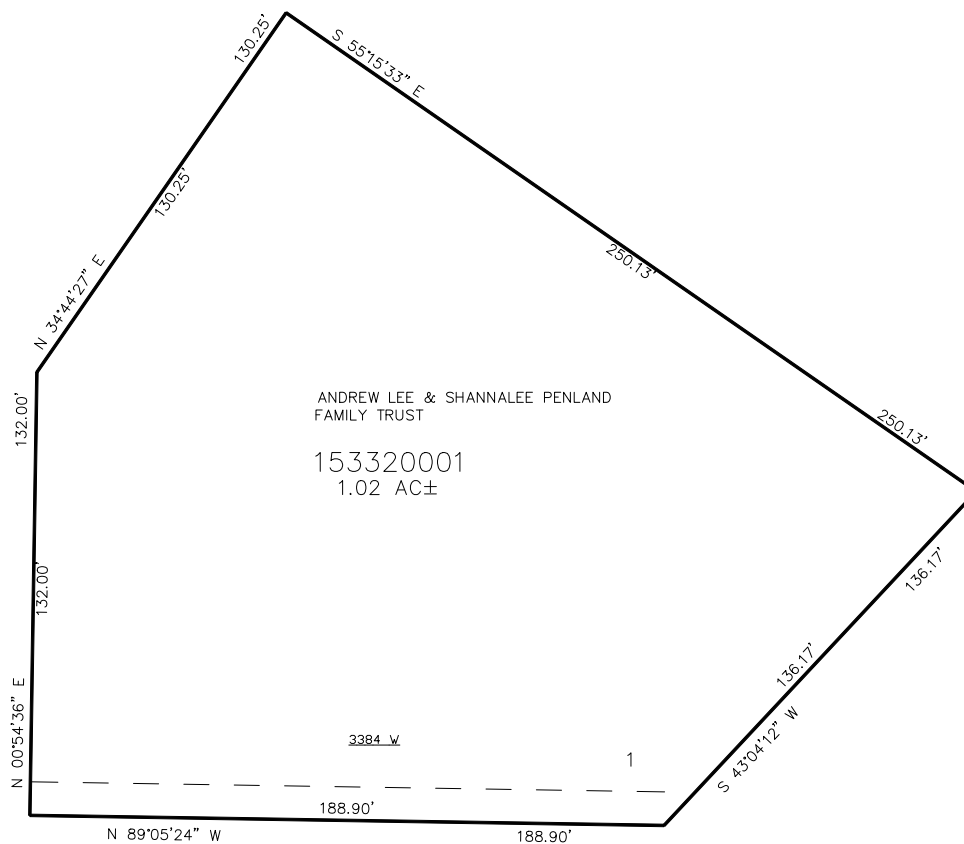
IN WEBER COUNTY

SCALE 1" = 30'

TAXING UNIT: 516

SEE PAGE 60-3

SEE PAGE 60-3



SEE PAGE 60-3

SEE PAGE 76-5

1800 SOUTH STREET

10' UTILITY & DRAINAGE EASEMENTS EACH  
SIDE OF PROPERTY LINES AS INDICATED  
BY DASHED LINES EXCEPT AS OTHERWISE  
SHOWN.

FOR COMPLETE ENG DATA SEE  
ORIGINAL DEDICATION PLAT IN  
BOOK 57, PAGE 11 OF RECORDS.

\*FOR TAX PURPOSES ONLY\*