

PART OF THE NE.1/4, OF SECTION 14, T.6N., R.2W., S.L.B. & M.
GERALD F TAYLOR FAMILY TRUST SUBDIVISION

IN MARIOTT-SLATERVILLE CITY

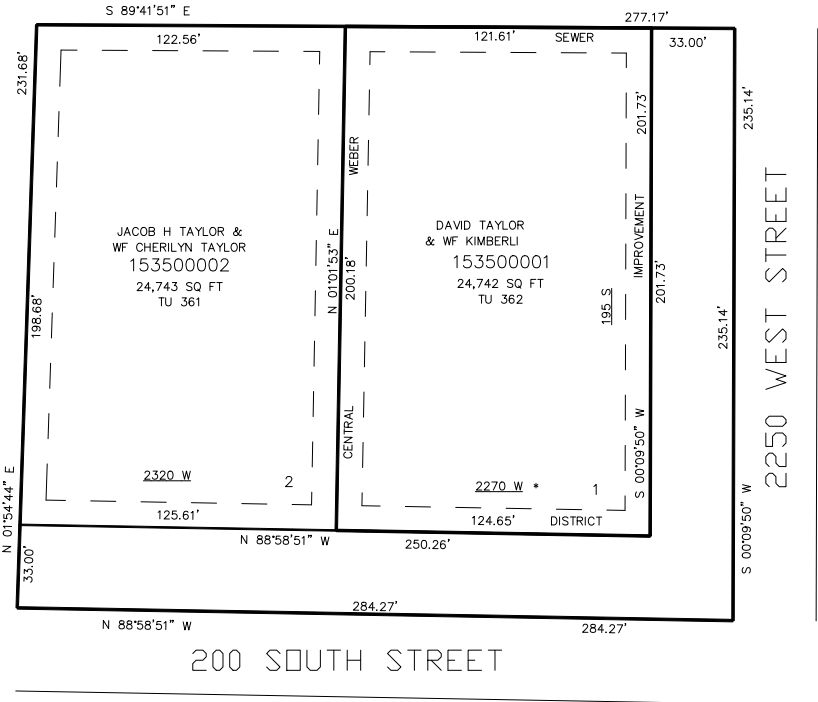
TAXING UNIT: 361,362

SCALE 1" = 40'

SEE PAGE 39

SEE PAGE 42

SEE PAGE 39



* AFFIDAVIT E#2378277

10' UTILITY & DRAINAGE EASEMENTS EACH
SIDE OF PROPERTY LINES AS INDICATED
BY DASHED LINES EXCEPT AS OTHERWISE
SHOWN.

FOR COMPLETE ENG DATA SEE
ORIGINAL DEDICATION PLAT IN
BOOK 58, PAGE 31 OF RECORDS.