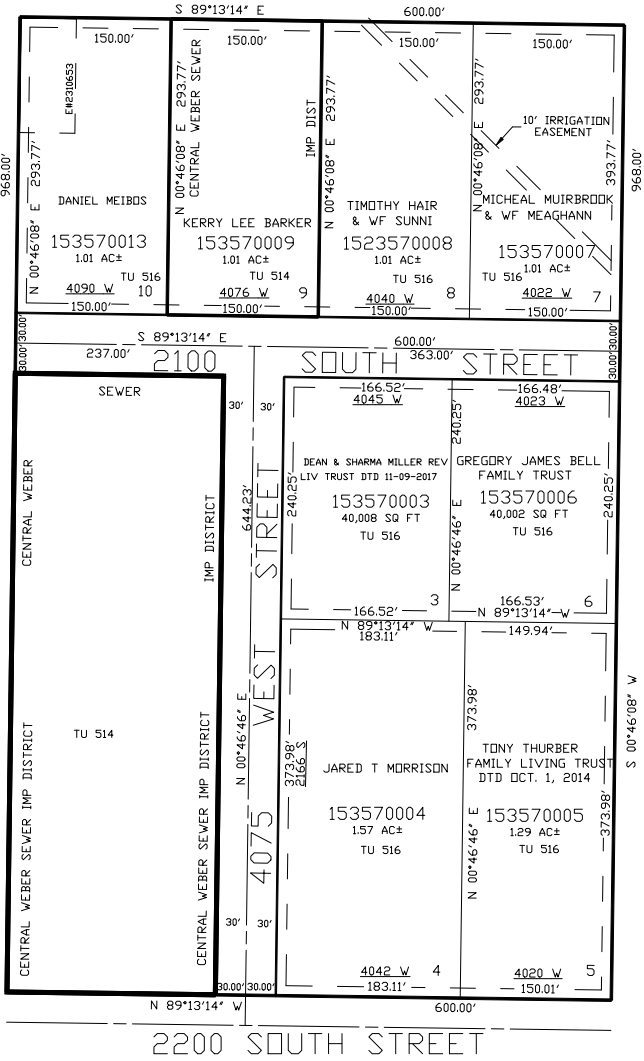


PART OF THE NW.1/4, OF SECTION 28, T.6N., R.2W., S.L.B. & M.
HAZY ACRES SUBDIVISION

IN WEBER COUNTY
SCALE 1" = 100'

TAXING UNIT: 514,516

SEE PAGE 78-4



SEE PAGE 78-4

SEE PAGE 78-4

SEE PAGE 78-4

FOR COMPLETE ENG DATA SEE
ORIGINAL DEDICATION PLAT IN
BOOK 58, PAGE 66 OF RECORDS.

10' UTILITY & DRAINAGE EASEMENTS EACH
SIDE OF PROPERTY LINES AS INDICATED
BY DASHED LINES EXCEPT AS OTHERWISE
SHOWN.

FOR TAX PURPOSES ONLY