

PART OF THE N.W. 1/4, OF SECTION 25, T.6N., R.2W., S.L.B. & M.
GERTGE BUSINESS PARK RESUBDIVISION OF LOT 7

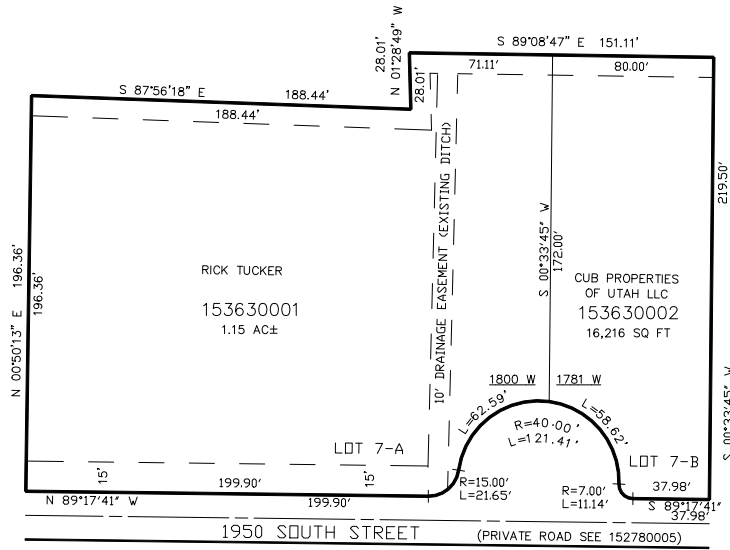
IN WEST HAVEN CITY

TAXING UNIT: 277

SCALE 1" = 50'

SEE PAGE 69

SEE PAGE 278



SEE PAGE 279

SEE PAGE 279

10' UTILITY & DRAINAGE EASEMENTS EACH
SIDE OF PROPERTY LINES AS INDICATED
BY DASHED LINES EXCEPT AS OTHERWISE
SHOWN.

* FOR EXISTING DITCH SEE DEDICATION PLAT

FOR COMPLETE ENG DATA SEE
ORIGINAL DEDICATION PLAT IN
BOOK 58, PAGE 97 OF RECORDS.

FOR TAX PURPOSES ONLY