

PART OF THE NE.1/4, OF SECTION 8, T.6N., R.2W., S.L.B. & M.
DEBRA ROBINSON SUBDIVISION

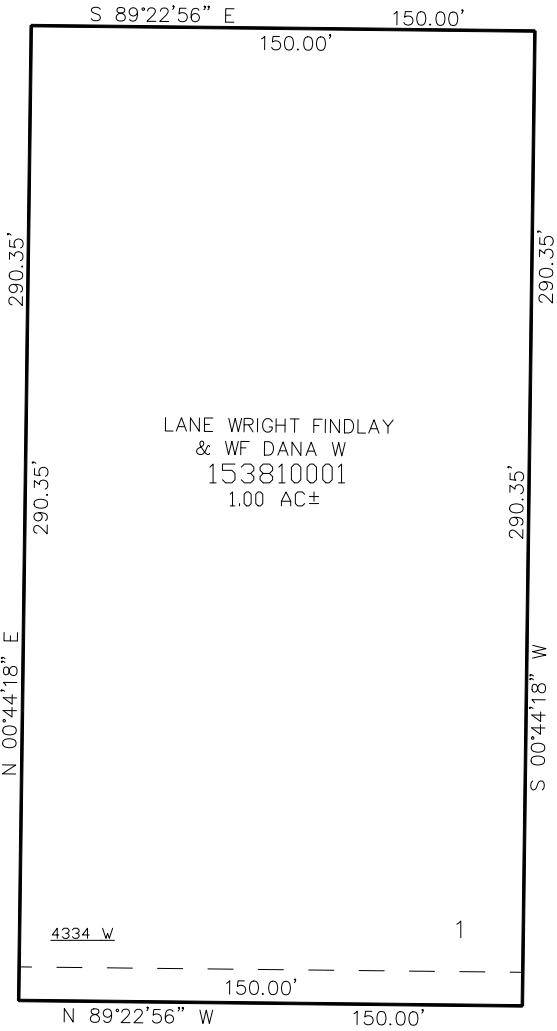
IN WEBER COUNTY
SCALE 1" = 30'

TAXING UNIT: 516

SEE PAGE 27-1

SEE PAGE 27-1

SEE PAGE 340



700 NORTH STREET

SEE PAGE 27-1

FOR COMPLETE ENG DATA SEE
ORIGINAL DEDICATION PLAT IN
BOOK 60, PAGE 93 OF RECORDS.

10' UTILITY & DRAINAGE EASEMENTS EACH
SIDE OF PROPERTY LINES AS INDICATED
BY DASHED LINES EXCEPT AS OTHERWISE
SHOWN.

FOR TAX PURPOSES ONLY