

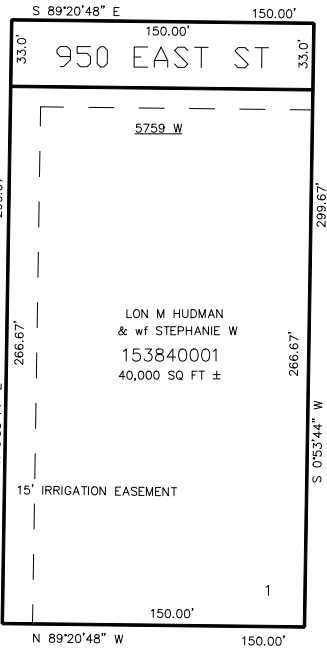
PART OF THE N.W.1/4, OF SECTION 7, T.6N., R.2W., S.L.B. & M.  
BENCHLAND ACRES SUBDIVISION

IN WEBER COUNTY  
SCALE 1" = 50'

TAXING UNIT: 531

SEE PAGE 26

SEE PAGE 26



SEE PAGE 26

SEE PAGE 26

FOR COMPLETE ENG DATA SEE  
ORIGINAL DEDICATION PLAT IN  
BOOK 61, PAGE 10 OF RECORDS.

10' UTILITY & DRAINAGE EASEMENTS EACH  
SIDE OF PROPERTY LINES AS INDICATED  
BY DASHED LINES EXCEPT AS OTHERWISE  
SHOWN.