

PART OF THE SE.1/4, OF SECTION 16, T.6N., R.2W., S.L.B. &amp; M.

## KIM AND JOSH ESTATES

IN WEBER COUNTY

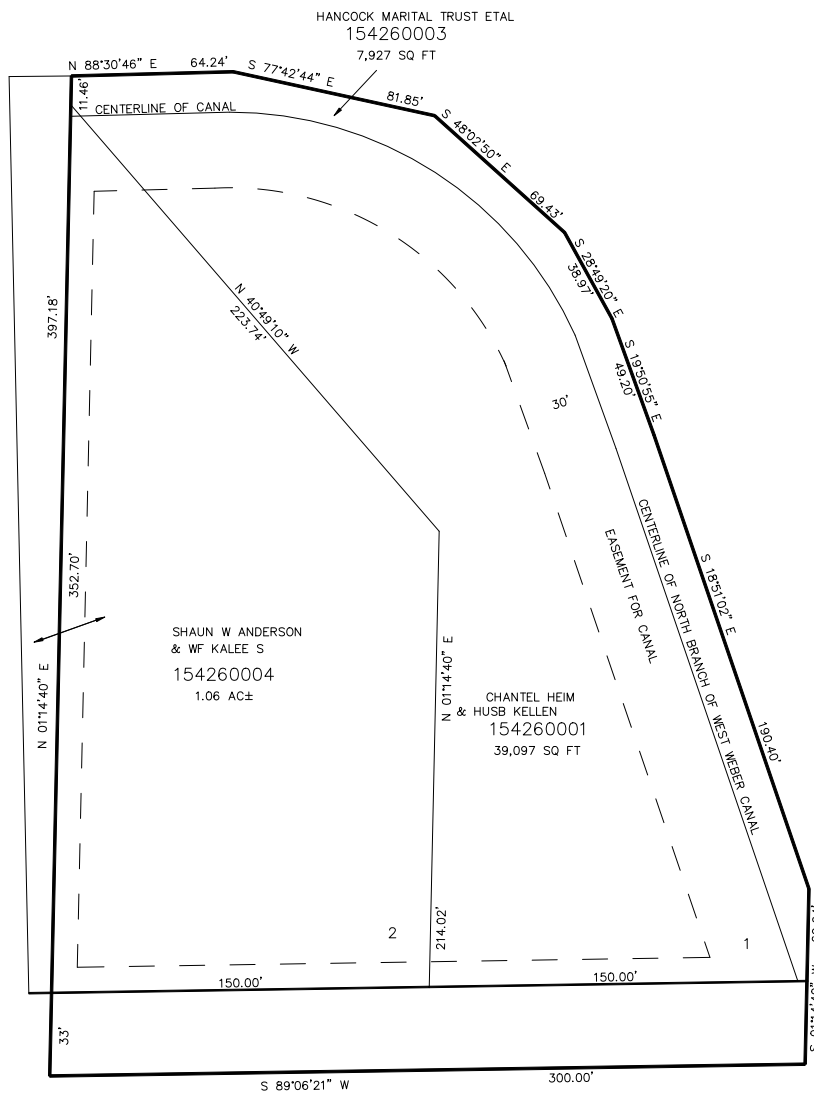
TAXING UNIT: 514

SCALE 1" = 40'

SEE PAGE 45

SEE PAGE 45

SEE PAGE 45



900 SOUTH STREET

SEE PAGE 45

 FOR COMPLETE ENG DATA SEE  
 ORIGINAL DEDICATION PLAT IN  
 BOOK 64, PAGE 26 OF RECORDS.

 10' UTILITY & DRAINAGE EASEMENTS EACH  
 SIDE OF PROPERTY LINES AS INDICATED  
 BY DASHED LINES EXCEPT AS OTHERWISE  
 SHOWN.