

PART OF THE SE.1/4, OF SECTION 35, T.6N., R.2W., S.L.B. & M.
WEST HAVEN INDUSTRIAL PARK, LOT No. 10, FIRST AMENDMENT

TAXING UNIT: 277

IN WEST HAVEN CITY

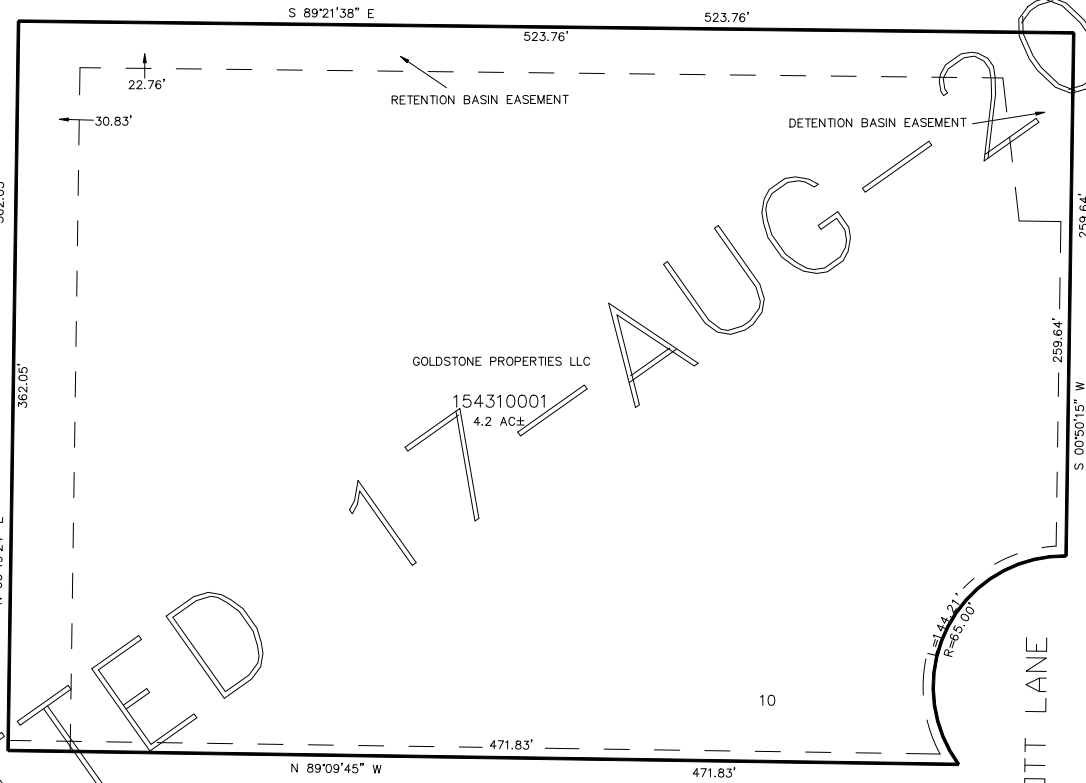
SCALE 1" = 50'

SEE PAGE 281

SEE PAGE 281

SEE PAGE 281

SEE PAGE 281



FOR COMPLETE ENG DATA SEE
ORIGINAL DEDICATION PLAT IN
BOOK 65, PAGE 61 OF RECORDS.

10' UTILITY & DRAINAGE EASEMENTS EACH
SIDE OF PROPERTY LINES AS INDICATED
BY DASHED LINES EXCEPT AS OTHERWISE
SHOWN.

FOR TAX PURPOSES ONLY

BK 03-07