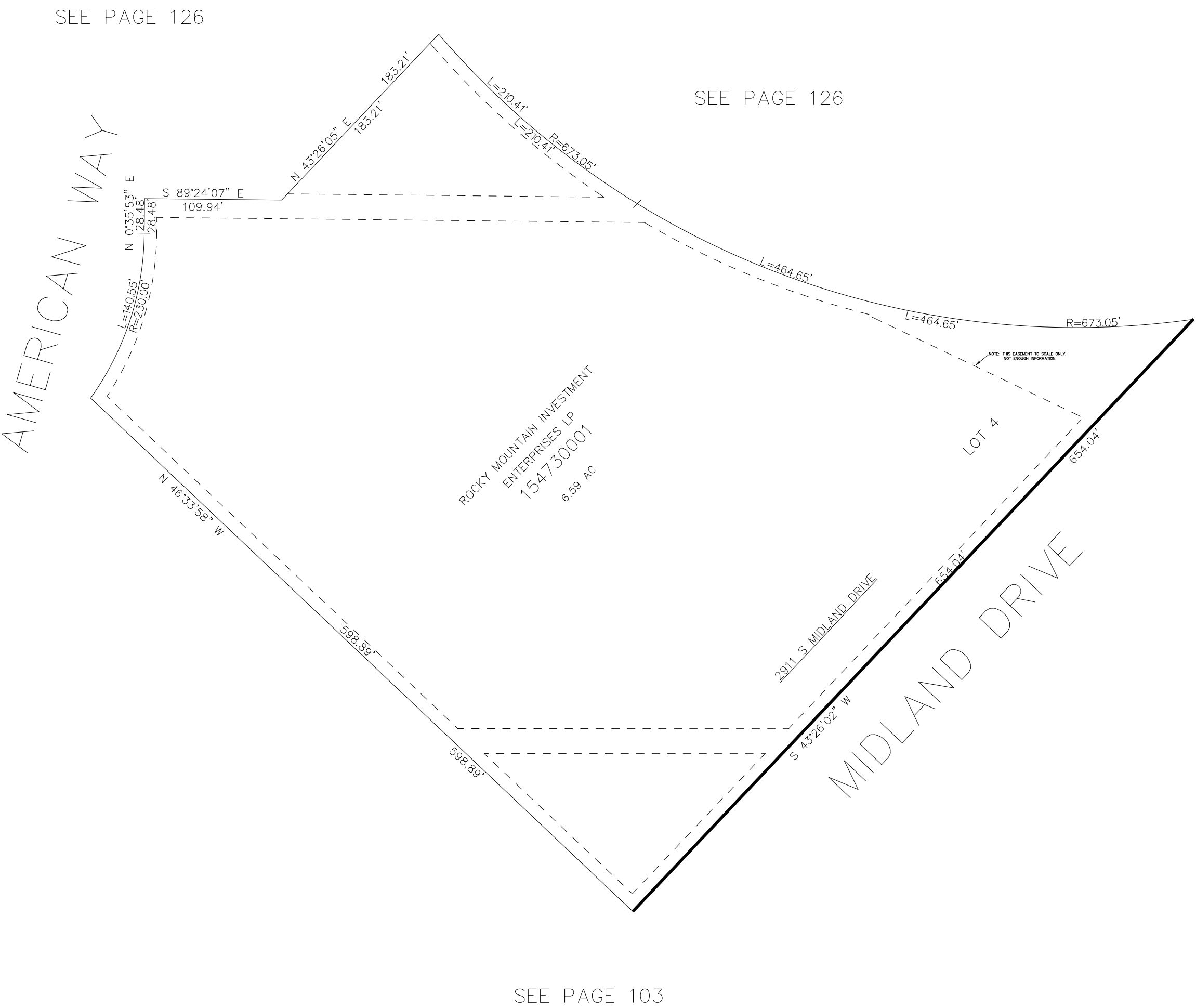


PART OF THE NE. & NW 1/4, OF SECTION 36, T.6N., R.2W., S.L.B. & M.
MIDLAND BUSINESS PARK LOT 4, 1ST AMENDMENT
VACATING AND RESUBDIVING LOT 4 OF MIDLAND BUSINESS PARK AND PORTION OF LOT 20,
OGDEN COMMERCIAL & INDUSTRIAL PARK – PLAT "A"
TAXING UNIT: 25
SCALE 1" = 80'
IN OGDEN CITY



10' UTILITY & DRAINAGE EASEMENTS EACH
SIDE OF PROPERTY LINES AS INDICATED
BY DASHED LINES EXCEPT AS OTHERWISE
SHOWN.

FOR COMPLETE ENG DATA SEE
ORIGINAL DEDICATION PLAT IN
BOOK 68, PAGE 52 OF RECORDS.