

PART OF THE SE.1/4, OF SECTION 26, T.6N., R.2W., S.L.B. & M.

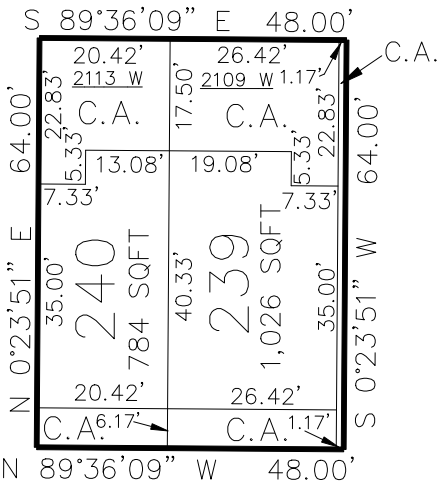
THE VILLAGE AT CHILD FARM P.U.D. PHASE 2, 5TH AMENDMENT

500

TAXING UNIT: 277

IN WEST HAVEN CITY  
SCALE 1" = 30'

WHISTON ST



UNIT	SERIAL#	OWNERSHIP
239	155000001	BANK OF UTAH CUSTODIAN
240	155000002	2113 WEST WHISTON STREET
C.A.	SEE154990012	

SEE PAGE 470

10' UTILITY & DRAINAGE EASEMENTS EACH  
SIDE OF PROPERTY LINES AS INDICATED  
BY DASHED LINES EXCEPT AS OTHERWISE  
SHOWN.

FOR COMPLETE ENG DATA SEE  
ORIGINAL DEDICATION PLAT IN  
BOOK 70, PAGE 52&53 OF RECORDS.