

PART OF THE SW.1/4, OF SECTION 28, T.6N., R.2W., S.L.B. & M.
HUNTER PLACE SUBDIVISION 1ST AMENDMENT

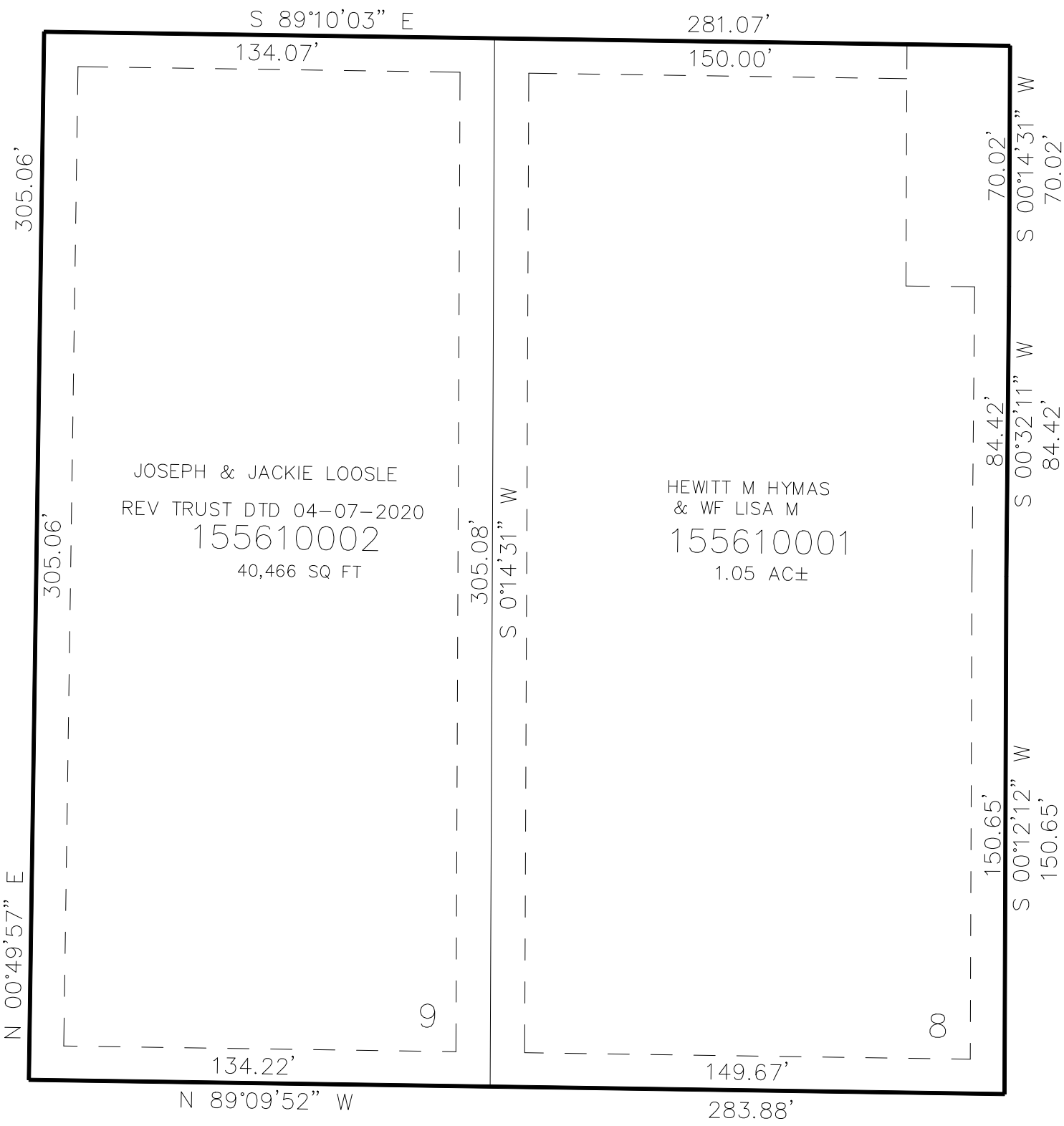
561

TAXING UNIT: 516

IN WEBER COUNTY
SCALE 1" = 40'

SEE PAGE 304

SEE PAGE 304



SEE PAGE 78-3

SEE PAGE 304

10' UTILITY & DRAINAGE EASEMENTS EACH
SIDE OF PROPERTY LINES AS INDICATED
BY DASHED LINES EXCEPT AS OTHERWISE
SHOWN.

FOR COMPLETE ENG DATA SEE
ORIGINAL DEDICATION PLAT IN
BOOK 76, PAGE 69 OF RECORDS.