

PART OF THE SW.1/4, OF SECTION 22, T.6N., R.2W., S.L.B. & M.

563

MITCH PAINTER SUBDIVISION

IN WEBER COUNTY

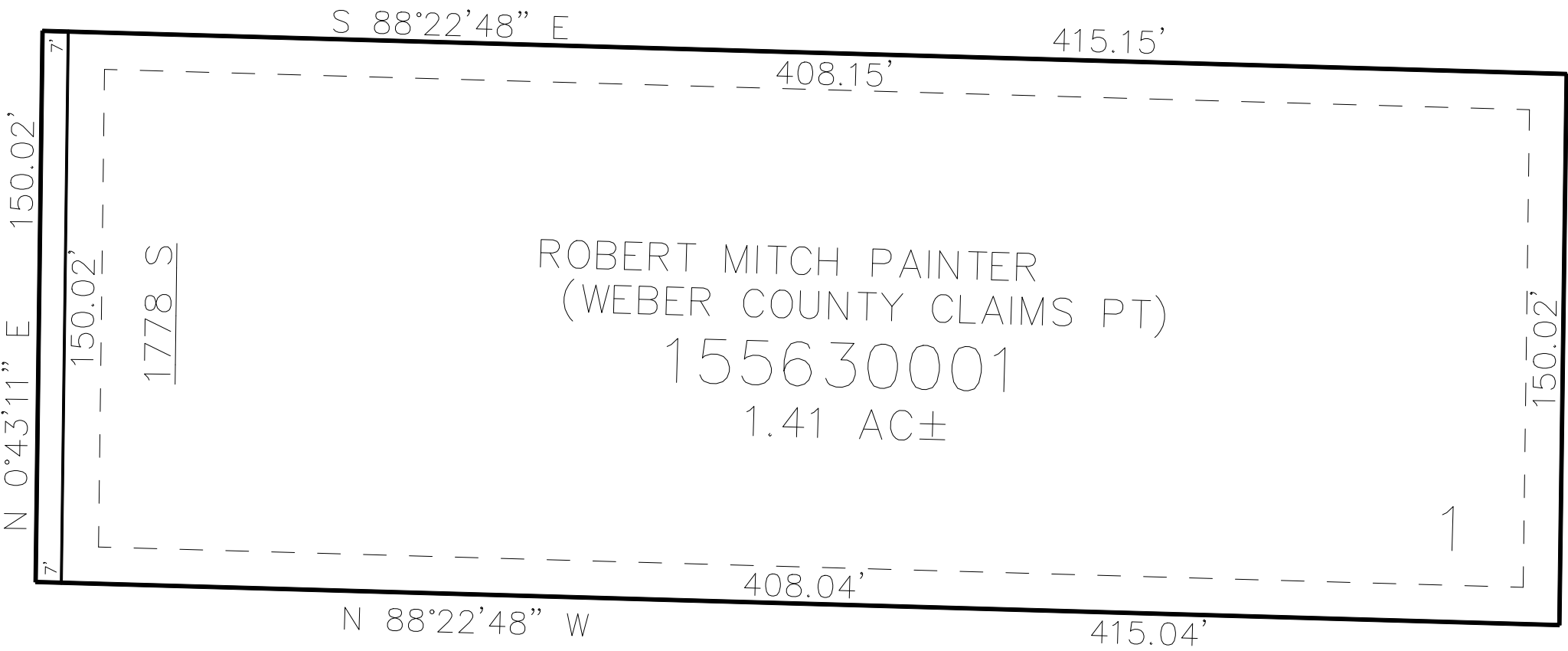
TAXING UNIT: 516

SCALE 1" = 40'

SEE PAGE 60-3

SEE PAGE 60-3

3500 WEST ST



SEE PAGE 60-3

SEE PAGE 60-3

10' UTILITY & DRAINAGE EASEMENTS EACH
SIDE OF PROPERTY LINES AS INDICATED
BY DASHED LINES EXCEPT AS OTHERWISE
SHOWN.

FOR COMPLETE ENG DATA SEE
ORIGINAL DEDICATION PLAT IN
BOOK 76, PAGE 71 OF RECORDS.