

PART OF THE N.1/2, OF SECTION 8, T.6N., R.2W., S.L.B. & M.

622

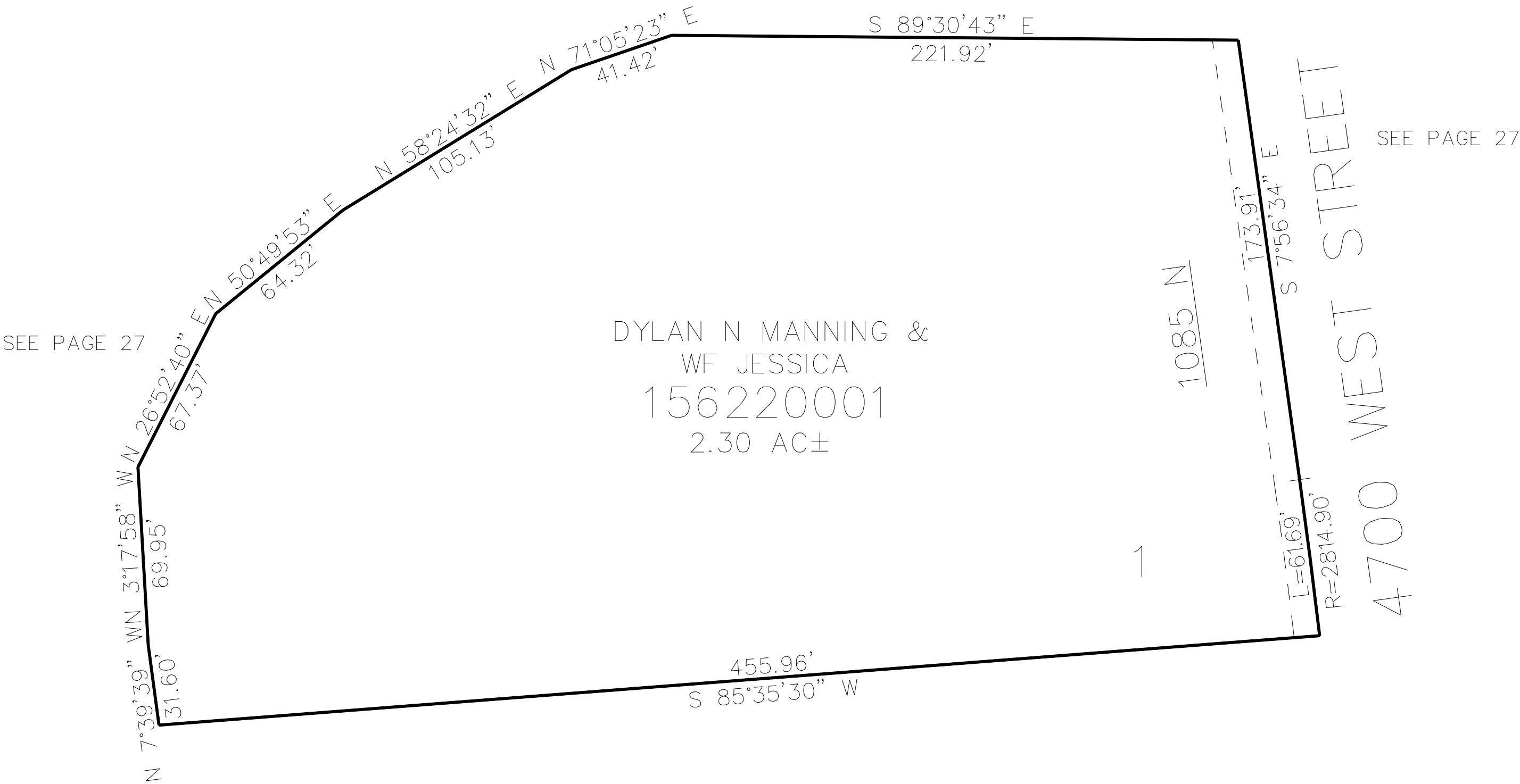
DYLAN/JESSICA MANNING ACRES

IN WEBER COUNTY

TAXING UNIT: 516

SCALE 1" = 40'

SEE PAGE 27



SEE PAGE 27

10' UTILITY & DRAINAGE EASEMENTS EACH  
SIDE OF PROPERTY LINES AS INDICATED  
BY DASHED LINES EXCEPT AS OTHERWISE  
SHOWN.

FOR COMPLETE ENG DATA SEE  
ORIGINAL DEDICATION PLAT IN  
BOOK 80, PAGE 94 OF RECORDS.