

PART OF THE SE. 1/4, OF SECTION 13, T.6N., R.2W., S.L.B. & M.

641

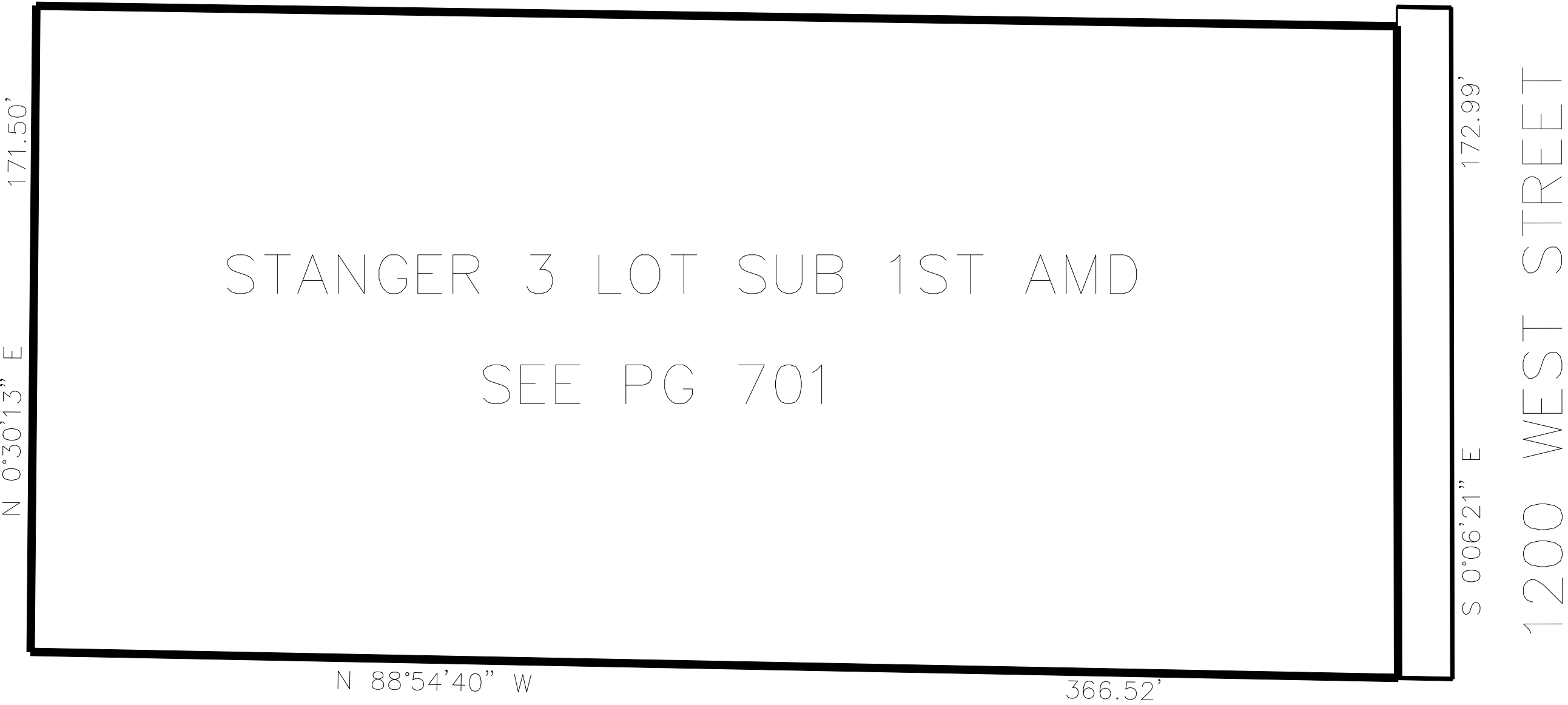
STANGER 3 LOT SUBDIVISION

IN MARIOTT-SLATERVILLE CITY

TAXING UNIT: 362

SCALE 1" = 30'

SEE PAGE 36



700 SOUTH STREET

SEE PAGE 36

* ADDRESS AFFIDAVIT E#2896658

10' UTILITY & DRAINAGE EASEMENTS EACH
SIDE OF PROPERTY LINES AS INDICATED
BY DASHED LINES EXCEPT AS OTHERWISE
SHOWN.

FOR COMPLETE ENG DATA SEE
ORIGINAL DEDICATION PLAT IN
BOOK 81, PAGE 84 OF RECORDS.