

PART OF THE SW. 1/4, OF SECTION 29, T.6N., R.2W., S.L.B. & M.

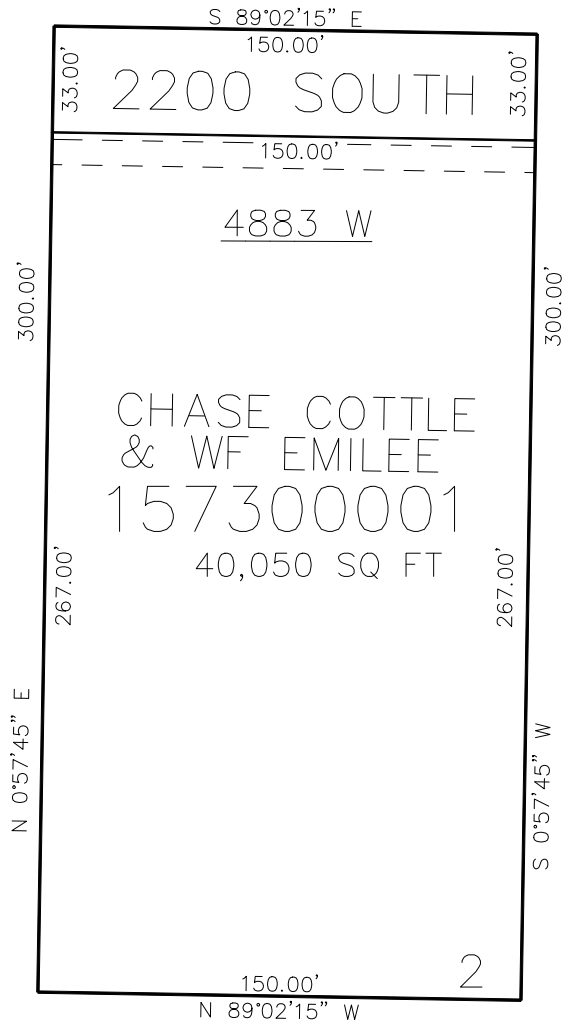
730

J&A GIBSON SUBDIVISION PHASE 2

IN WEBER COUNTY

SCALE 1" = 30'

TAXING UNIT: 514



SEE PAGE 79

SEE PAGE 79

10' UTILITY & DRAINAGE EASEMENTS EACH  
SIDE OF PROPERTY LINES AS INDICATED  
BY DASHED LINES EXCEPT AS OTHERWISE  
SHOWN.

FOR COMPLETE ENC DATA SEE  
ORIGINAL DEDICATION PLAT IN  
BOOK 88, PAGE 49 OF RECORDS.