

PART OF THE S.1/4, OF SECTION 12, T.6N., R.2W., S.L.B. & M.
SMOUT FAMILY HOMESTEAD 1ST AMENDMENT

IN MARRIOTT-SLATERVILLE CITY
SCALE 1" = 30'

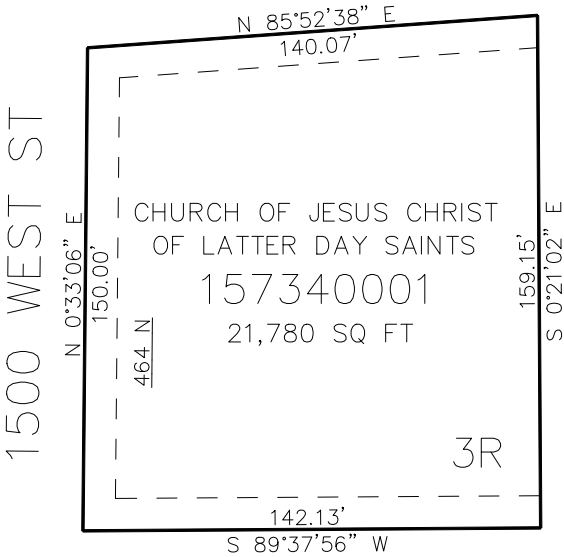
TAXING UNIT: 362

SEE PAGE 532

SEE PAGE 532

SEE PAGE 532

SEE PAGE 532



10' UTILITY & DRAINAGE EASEMENTS EACH
SIDE OF PROPERTY LINES AS INDICATED
BY DASHED LINES EXCEPT AS OTHERWISE
SHOWN.

FOR COMPLETE ENG DATA SEE
ORIGINAL DEDICATION PLAT IN
BOOK 88, PAGE 81 OF RECORDS.