

PART OF THE NW.1/4, OF SECTION 28, T.6N., R.2W., S.L.B. & M.

750

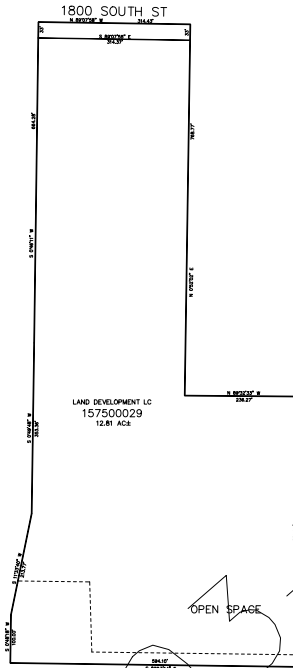
TAYLOR LANDING PH 1A

IN WEBER COUNTY

TAXING UNIT: 514

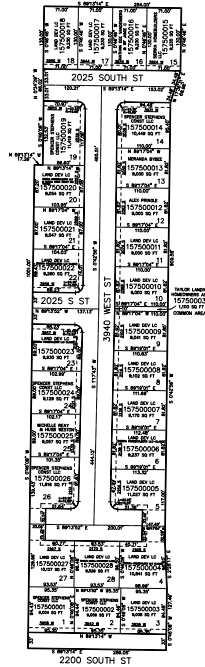
SCALE 1" = 200'

SEE PAGE 78-4



SEE PAGE 78-4

SEE PAGE 78-4



SEE PAGE 78-4

10' UTILITY & DRAINAGE EASEMENTS EACH
SIDE OF PROPERTY LINES AS INDICATED
BY DASHED LINES EXCEPT AS OTHERWISE
SHOWN.

FOR COMPLETE ENC DATA SEE
ORIGINAL DEDICATION PLAT IN
BOOK 90, PAGE 60 OF RECORDS.