

PART OF THE SE. 1/4, OF SECTION 12, & THE NE. 1/4 OF SECTION 13, T.6N., R.2W., S.L.B. & M.

752

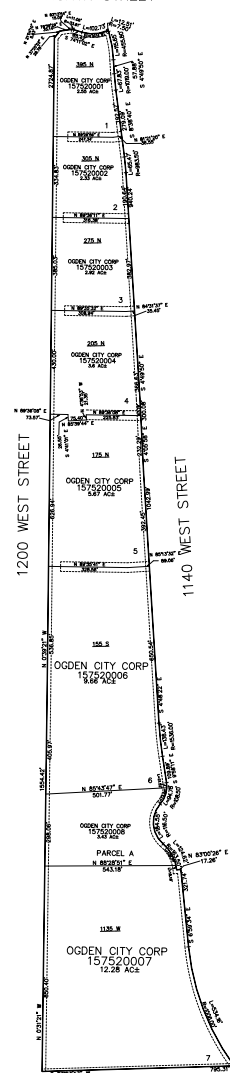
BUSINESS DEPOT OGDEN PLAT 36

IN OGDEN CITY

TAXING UNIT: 25

SCALE 1" = 400'

400 NORTH STREET



SEE PAGE 33

SEE PAGE 33

10' UTILITY & DRAINAGE EASEMENTS EACH
SIDE OF PROPERTY LINES AS INDICATED
BY DASHED LINES EXCEPT AS OTHERWISE
SHOWN.

FOR COMPLETE ENC DATA SEE
ORIGINAL DEDICATION PLAT IN
BOOK 90, PAGE 98 & 99 OF RECORDS.