

PART OF N.W. 1/4 OF SEC. 27 & N.E. 1/4 OF SEC. 28, T.7N., R.1W., S.L.B. & M.

63

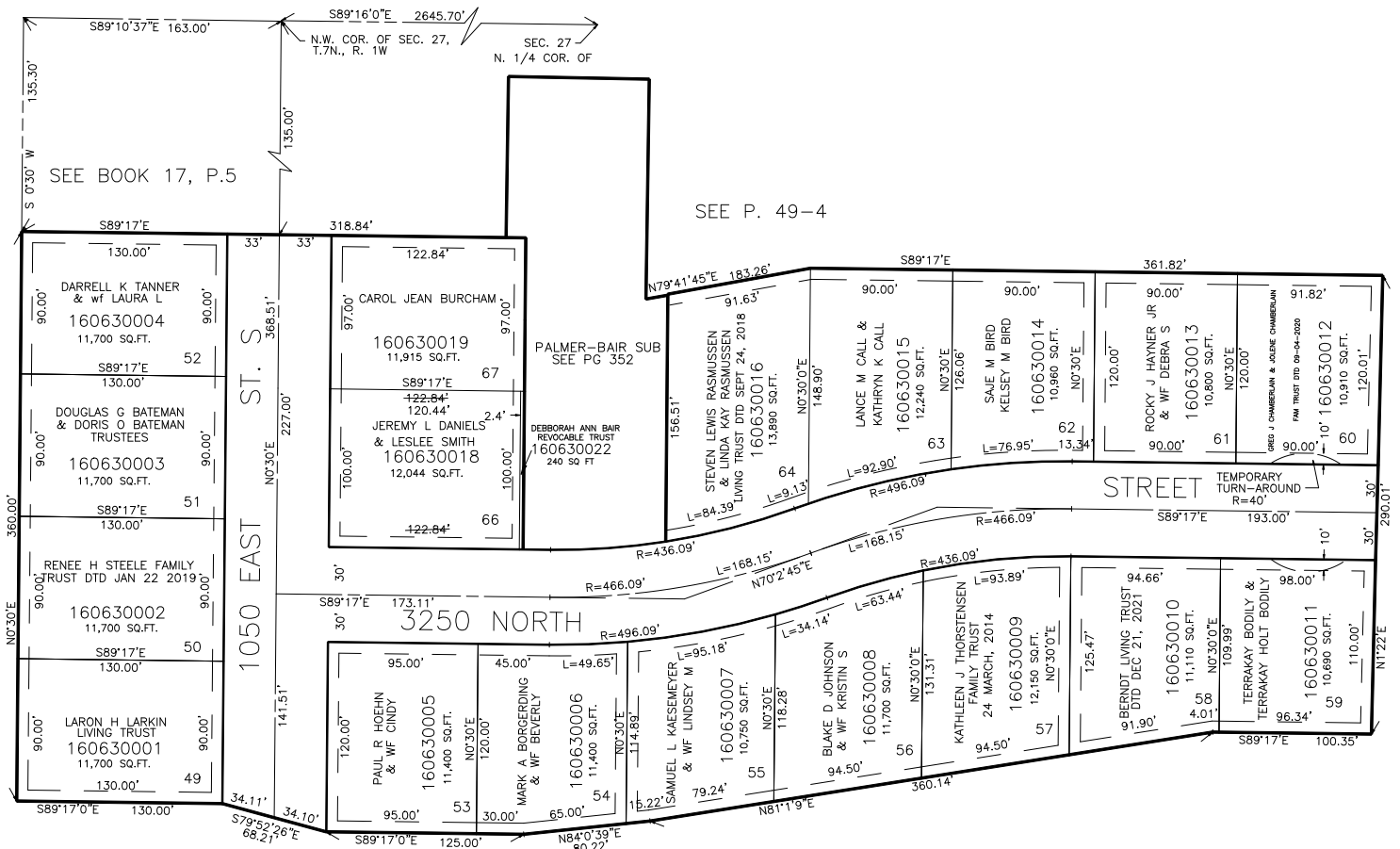
INDIAN HILLS SUBDIVISION NO. 2

LOTS 49 TO 67

TAXING UNIT: 10

IN NORTH OGDEN CITY

SCALE 1" = 60'



10' UTILITY & DRAINAGE EASEMENTS EACH
SIDE OF PROPERTY LINES AS INDICATED
BY DASHED LINES EXCEPT AS OTHERWISE
SHOWN.

FOR COMPLETE ENG DATA SEE
ORIGINAL DEDICATION PLAT IN
BOOK 19, PAGE 42 OF RECORDS.

FOR TAX PURPOSES ONLY