

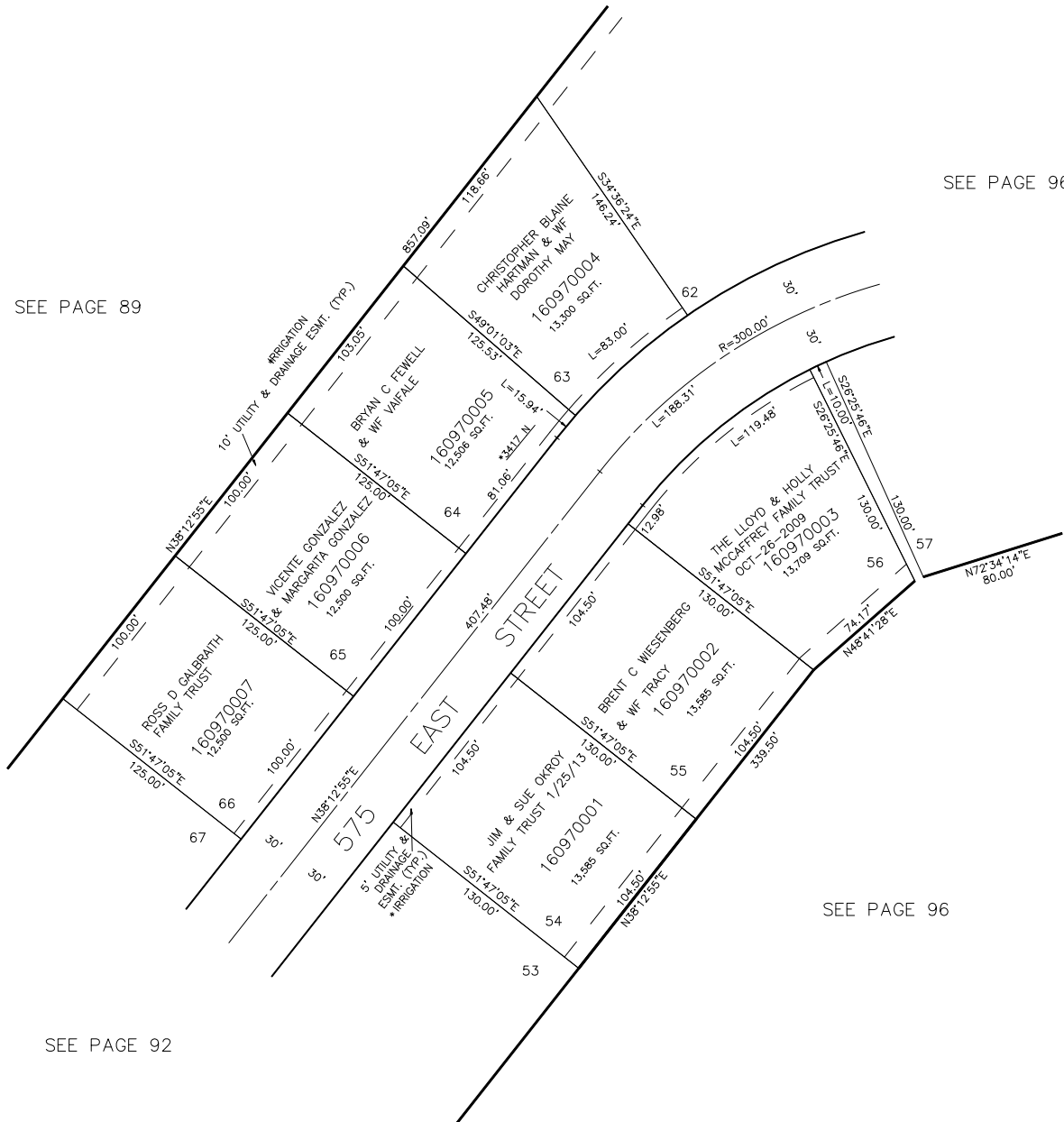
PART OF S.W. 1/4 OF SECTION 21, T.7N., R.1W., S.L.B. & M.
LAKEVIEW HEIGHTS SUBDIVISION PHASE 1 PRUD

TAXING UNIT: 10

AMENDED PLAT
LOTS 54-56, 63-66

IN NORTH OGDEN CITY

SCALE 1" = 50'



SEE PAGE 96

SEE PAGE 89

SEE PAGE 96

SEE PAGE 92

* SEE CERTIFICATION
(1296-429)

*ADDRESS AFFIDAVIT E#2962213

FOR COMPLETE ENG DATA SEE
ORIGINAL DEDICATION PLAT IN
BOOK 23, PAGES 75 TO 84 OF RECORDS.

FOR TAX PURPOSES ONLY