

PART OF N.W. 1/4 OF SECTION 27, T.7N., R.1W., S.L.B.&M.
CAMARREN COVE ESTATES SUBDIVISION
PHASE 8

TAXING UNIT: 10

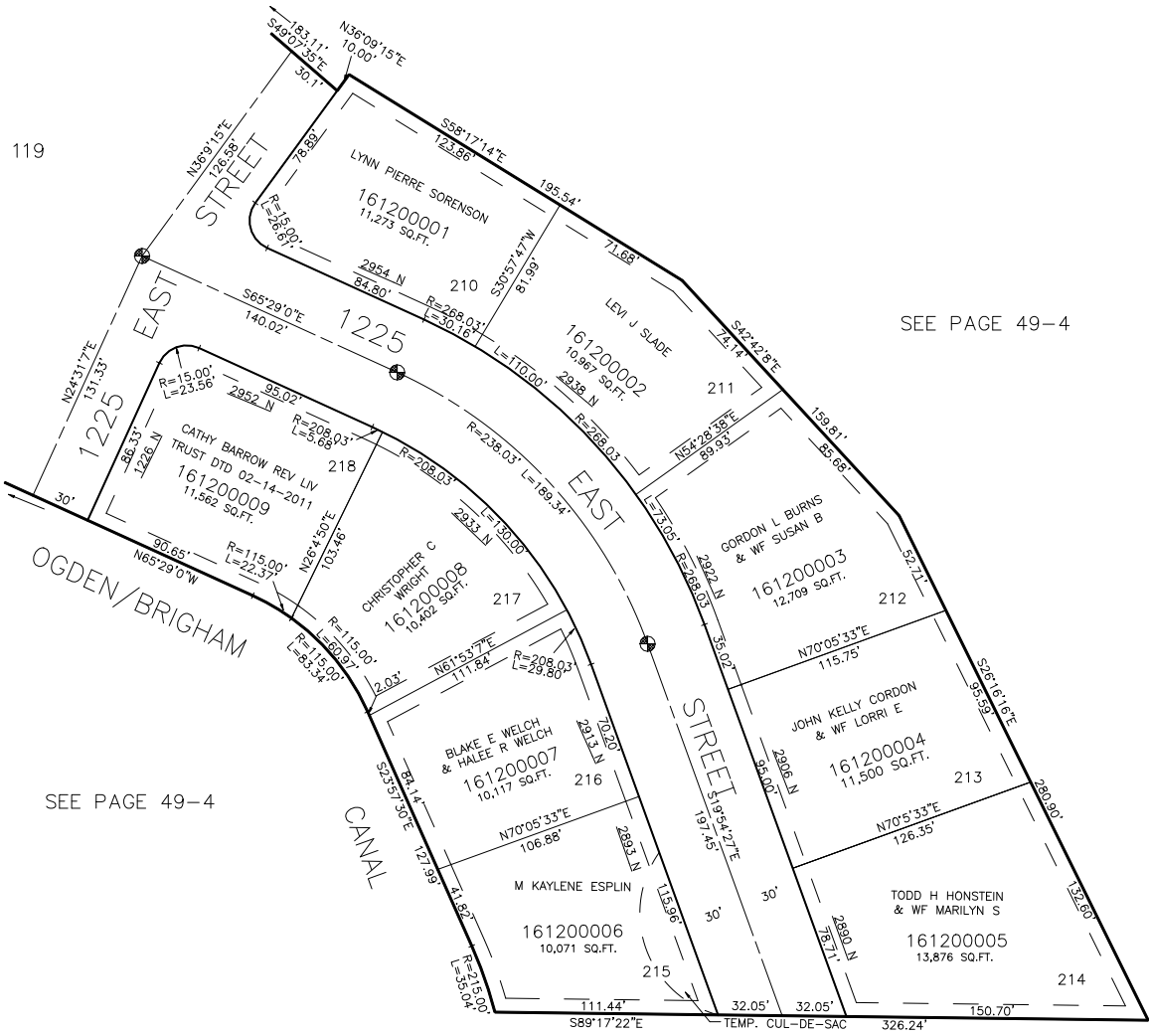
LOTS 210 TO 218

IN NORTH OGDEN CITY

SCALE 1" = 50'

SEE PAGE 119

SEE PAGE 49-4



SEE PAGE 49-4

SEE PAGE 49-4

7' UTILITY & DRAINAGE EASEMENTS EACH
SIDE OF PROPERTY LINES AS INDICATED
BY DASHED LINES EXCEPT AS OTHERWISE
SHOWN.

FOR COMPLETE ENG DATA SEE
ORIGINAL DEDICATION PLAT IN
BOOK 27, PAGE 35 OF RECORDS.

⊕ INDICATES SURVEY MONUMENTS

FOR TAX PURPOSES ONLY

JL 7-85