

PART OF THE SE 1/4, SEC. 1, T.7N., R.1W., S.L.B. & M.
SERENITY HILLS SUBDIVISION

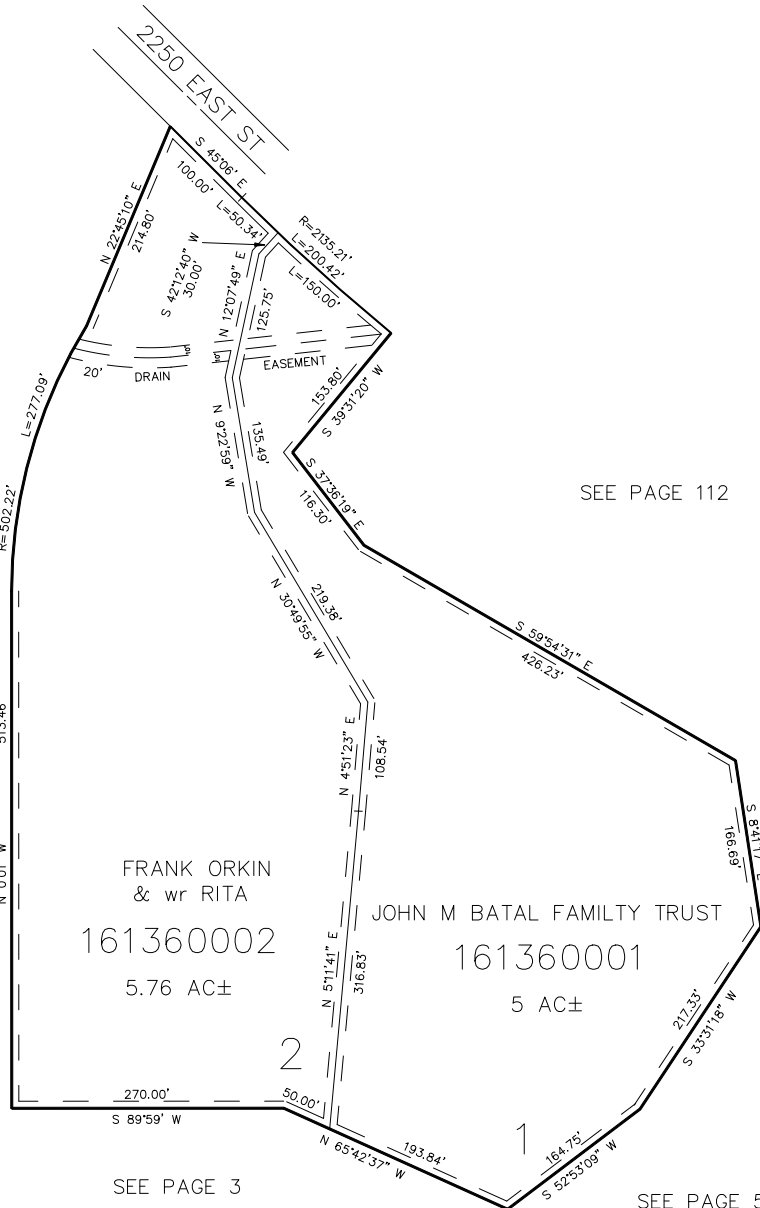
IN WEBER COUNTY

SCALE 1" = 100'

TAXING UNIT: 36

SEE PAGE 3

SEE PAGE 112



SEE PAGE 3

SEE PAGE 5

FOR COMPLETE ENG DATA SEE
ORIGINAL DEDICATION PLAT IN
BOOK 32, PAGE 56 OF RECORDS.

7' UTILITY & DRAINAGE EASEMENTS EACH
SIDE OF PROPERTY LINES AS INDICATED
BY DASHED LINES EXCEPT AS OTHERWISE
SHOWN.