

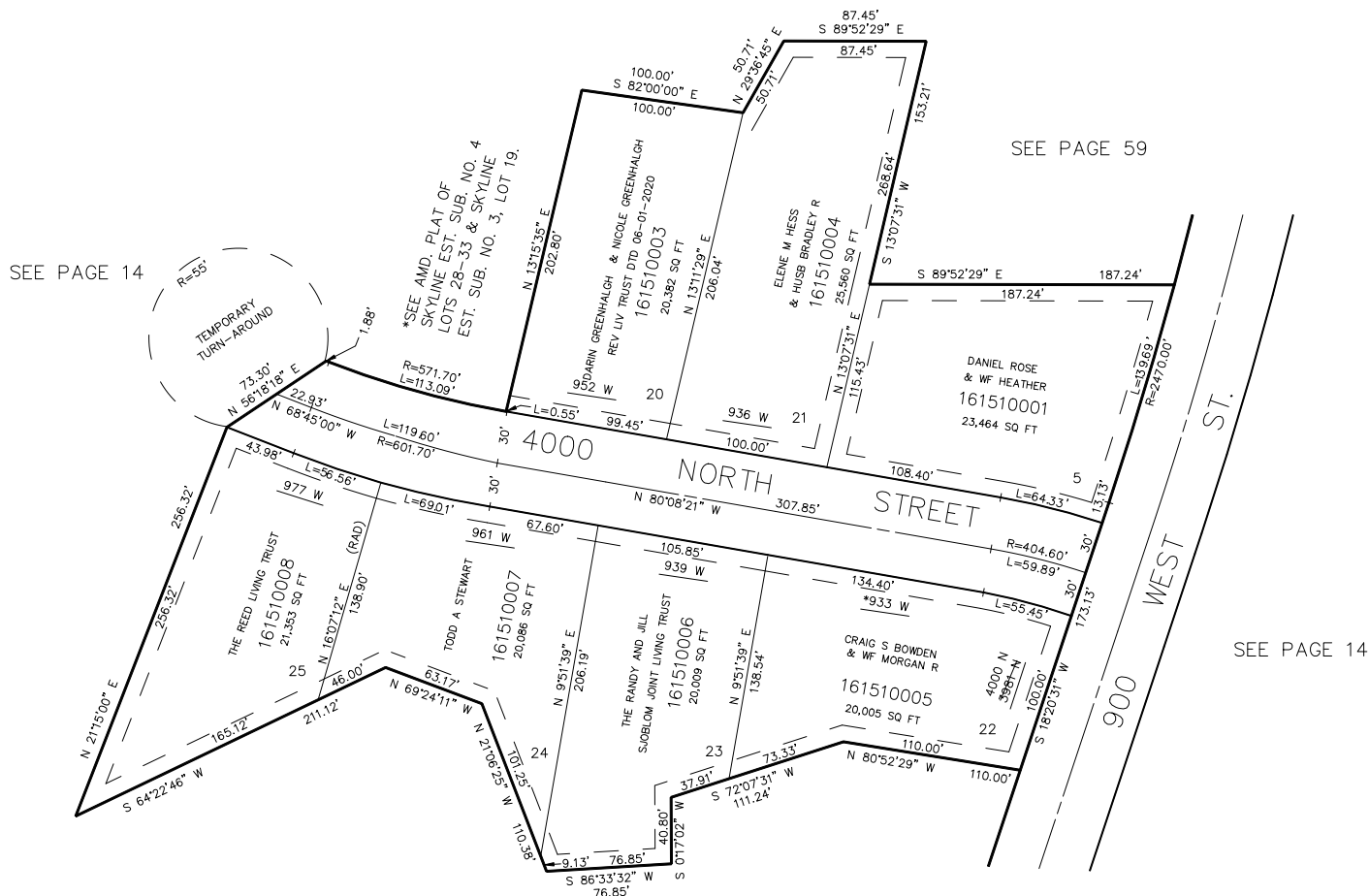
PART OF THE NE 1/4 OF SECTION 19, T.7N., R.1W., S.L.B. & M.
AND AMENDED LOT 5 OF SKYLINE ESTATES SUB. NO. 1
SKYLINE ESTATES SUBDIVISION NO. 3

TAXING UNIT: 11

IN PLEASANT VIEW CITY

SCALE 1" = 60'

SEE PAGE 150



SEE PAGE 14

* ADDRESS CORRECTION
10-SEP-2015 E# 2755128

10' UTILITY & DRAINAGE EASEMENTS EACH
SIDE OF PROPERTY LINES AS INDICATED
BY DASHED LINES EXCEPT AS OTHERWISE
SHOWN.

*SEE AMD. PLAT OF SKYLINE
EST. SUB. NO. 4 LOTS 28-33
& SKYLINE EST. SUB. NO. 3
LOT 19, IN BOOK 38, PAGE 67
OF RECORDS.

FOR COMPLETE ENG DATA SEE
ORIGINAL DEDICATION PLAT IN
BOOK 34, PAGE 40 OF RECORDS.

FOR TAX PURPOSES ONLY